



ANNUAL SESSION PROGRAM

ANNUAL SESSION SPONSORS & DONORS

THANK YOU TO OUR 2025 ANNUAL SESSION SPONSORS



Special Risk Division



CONFERENCE BAG SPONSOR



PEN SPONSOR



PRESIDENT'S RECEPTION

Sponsored in part by the Kentucky Affiliate

THANK YOU TO OUR 2025 ANNUAL SESSION AWARDS FUND SPONSORS

EXTENSION HOUSING OUTREACH AWARD



FINANCIAL MANAGEMENT AWARD IN MEMORY OF DEAN DON FELKER

Indiana Affiliate of NEAFCS

PAST PRESIDENT'S NEW PROFESSIONAL AWARD

NEAFCS Past Presidents

THANK YOU TO OUR 2025 ANNUAL SESSION DONORS

Michigan State University Extension Health and Nutrition Institute

Michigan State University Extension Director's Office

Michigan Assoc of Extension Agents (MAEA)

Michigan Council of Extension Associations (MCEA)

Michigan Epsilon Sigma Phi (ESP)

Region 7 Beef Council of North Dakota, Nebraska and Kansas

Christine Venema, Michigan



Ohio Joint Council of Extension Professionals



NEAFCS CENTRAL REGION AFFILIATE DONORS

The Central Region of the National Extension Association of Family and Consumer Sciences extends heartfelt thanks to the state affiliates who donated to support the 2025 NEAFCS Annual Session in Grand Rapids.

ILLINOIS

IOWA

KANSAS

MINNESOTA

MICHIGAN

MISSOURI

NORTH DAKOTA

OHIO

SOUTH DAKOTA

WISCONSIN

TABLE OF CONTENTS

Sponsor and Donor Thank You	IFC	2025 Annual Session Agenda	23
Attendee Maps	2	Sunday, October 19	23
Board of Directors	4	Monday, October 20	24
Welcome Letters	5	Central Region Committee Members . .	32
NEAFCS History	10	Tuesday, October 21	33
General Information	12	Wednesday, October 22	42
2025 Schedule	14	Wednesday Exhibit Forums	54
Tuesday Tracks	16	Thursday, October 23	55
Wednesday Tracks	17	Showcase of Excellence	63
Thursday Tracks	19	Exhibit Hall Floor Plan	68
President's Charity & Service Project . .	20	Exhibitors	69
NEAFCS Endowment Fund	22	Endowment Donors	74
		Notes	80

THANK YOU TO OUR ANNUAL SESSION COMMITTEE

Jennifer Bridge,
President

Rick Griffiths,
Immediate Past-President

Dianne Christensen,
President-Elect

Susan Moore,
Vice President Professional Development

Barb Wollan,
Central Region Director

Courtney Aldrich,
Annual Session Tri-Liaison

Samantha Roth,
Annual Session Tri-Liaison

Melissa J. Rupp,
Annual Session Tri-Liaison

Andrea Haubner,
Program Development Committee Co-Chair

Andrea Nikolai,
Program Development Committee Co-Chair



**National Extension
Association of Family
& Consumer Sciences**

325 John Knox Rd. Suite L103
Tallahassee, FL 32303
P: (850) 205-5638 / F: (850) 222-3019
www.neafcs.org

SOCIAL MEDIA



@Tweet_NEAFCS
#NEAFCS2022



Join our Facebook Group
www.facebook.com/groups/NEAFCS

PROUD PARTNERS OF



AAFCFS
AMERICAN ASSOCIATION OF
FAMILY & CONSUMER SCIENCES

Joint Council of Extension Professionals

JCEP

Amway Grand Meeting Maps

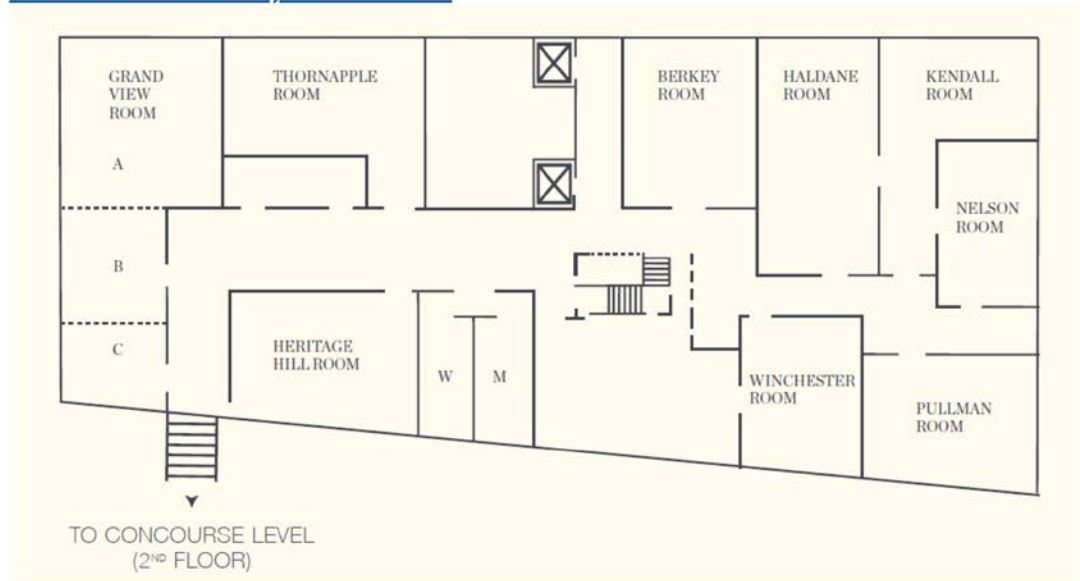
**Amway Grand Bus Pick-Up
for Pre-Boat Tour and 2
In-Depth Sessions**



ATTENDEE MAPS

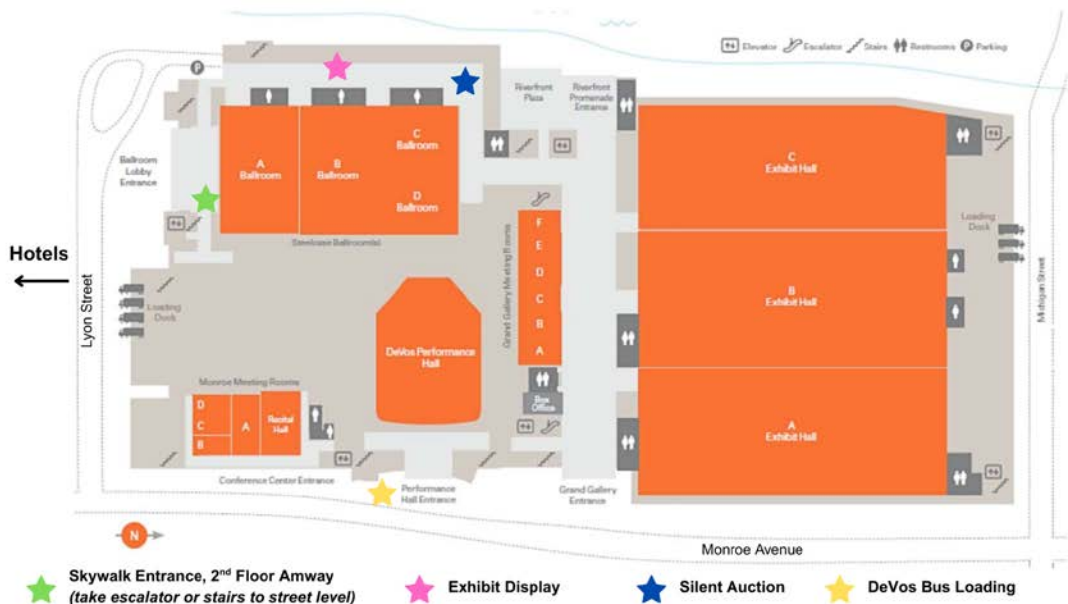
Amway Grand Meeting Map Continued

Conference Level, Third Floor



DeVos Center Map

Street Level



NEAFCS BOARD OF DIRECTORS

Jennifer Bridge, *President*
University of Kentucky

Dianne Christensen, *President-Elect*
New Mexico State University

Cindy Thompson, *Secretary*
Iowa State University

Lance Hansen, *Treasurer*
University of Idaho Extension

Susan Moore, *VP Professional Development*
University of Georgia Cooperative Extension

Troy Anderson, *VP Member Resources*
University of Maryland Extension

Donna Jung, *VP Awards & Recognition*
Oklahoma Cooperative Extension Service

Christine Zellers, *VP Public Affairs*
Rutgers Cooperative Extension

Lisa Fishman, *Eastern Region Director*
University of Maine Cooperative Extension

Samantha Kennedy, *Southern Region Director*
University of Florida

Barb Wollan, *Central Region Director*
Iowa State University Extension and Outreach

Sheila Gains, *Western Region Director*
Colorado State University Extension

Rick Griffiths, *Immediate Past President*
New Mexico State University



PRESIDENT'S WELCOME



*"Immerse yourself
in diverse
"communities",
uncovering their
history while
experiencing their
uniqueness and
challenges."*

Welcome to the 91st Annual Session of the National Extension Association of Family and Consumer Sciences, hosted in the vibrant city of Grand Rapids, Michigan!

This event is designed to ignite a "spark" for your professional journey and development. We hope you build "connections" with other professionals, forming lifelong friendships, while gaining insight and inspiration through "innovative" programs presented by professionals who bring a wealth of knowledge and a fresh lens into familiar and new areas.

Immerse yourself in diverse "communities", uncovering their history while experiencing their uniqueness and challenges. The in-depth sessions go beyond simple excursions: they're collaborative adventures where you become an active participant in discovering local culture. Bring back at least one insight or story from your session to share with colleagues who could not attend. This hands-on approach helps you move beyond the hotel and into the heart of the community, capturing the true beauty of its people, its landscape, and the stories they share.

The conference planning team members have worked for months preparing for our conference. The NEAFCS Executive Board partnered with Courtney Aldrich, Samantha Roth, and Melissa J. Rupp, the Central Region conference tri-liaisons. Our management company has also worked tirelessly to make this time together possible. Please help me thank them and all those who served on the conference committees for their creativity, insight, energy, and numerous contributions. Their efforts will ensure this year's conference is the best one yet!

Once you return home, we hope your professional "growth" and enrichment will be taken back to your programs and communities. Add spark to those around you!

We are so happy you are joining us!

A handwritten signature in cursive script that reads "Jennifer Bridge". The ink is dark and the signature is fluid and elegant.

Jennifer Bridge, NEAFCS President

VICE PRESIDENT FOR PROFESSIONAL DEVELOPMENT WELCOME



*"We come together
to spark new
and existing
connections
with like-minded
individuals
nationwide."*

Welcome to our 2025 National Extension Association of Family and Consumer Sciences (NEAFCS) Annual Session!

Our host this year is the Central Region in Grand Rapids, Michigan with Tri-Liaisons, Courtney Aldrich (MSU), Samantha Roth (UMN), and Melissa J. Rupp (OSU). We thank these affiliate liaisons, their subcommittees, national committee members, and other contributors for their efforts to create an abundance of professional development opportunities designed to help you ignite your SPARK.

Our theme this year is "SPARK Connections, SPARK Innovations, SPARK Communities, and SPARK Growth." We come together to spark new and existing connections with like-minded individuals nationwide and gain insights and skills designed to spark innovation while listening to expert speakers and networking with colleagues in beautiful Grand Rapids, Michigan!

The 2025 Annual Session enables you to learn about resources in Extension nationwide to obtain access to the curriculums, strategies, and skills we all need to spark our communities, states, and regions, and to SPARK our growth while enjoying the beautiful fall foliage in Michigan!

Let's join together and kindle the spark that nurtures and sustains our programs while reigniting our desire to impact those we serve.

Susan L. Moore

Vice President for Professional Development

WELCOME FROM THE CITY OF GRAND RAPIDS



City of Grand Rapids, Michigan

OFFICE OF THE MAYOR

DAVID LAGRAND
MAYOR

Dear NEAFCS Guests:

Welcome to Grand Rapids – we are delighted to host you here in our city.

While you no doubt have a full agenda, I do hope you will take time to explore Grand Rapids’ downtown and its dynamic neighborhoods. From a walkable city center with restaurants, shops, and museums, to endless outdoor options such as golfing, fishing, hiking and biking, Grand Rapids is a great place to both live and visit – and we’re so glad you’re here.

If you’re an art connoisseur, a walk downtown will take you by our Robert Indiana *LOVE* sculpture, and Alexander Calder’s *La Grande Vitesse* (more commonly referred to as “*The Calder*”) which is the first public work of art funded in part by the National Endowment of the Arts. Or if you need a break from the bustle of downtown, look no farther than one of our 75 City-owned parks, or take a stroll on a trail alongside the Grand River. And of course, as we are referred to as “Beer City USA,” a trip to Grand Rapids would not be complete without a stop at one of our many breweries that are located downtown and throughout our neighborhoods.

And that’s not all we’re known for – our metropolitan area is a knowledge center that boasts over a dozen colleges and universities. Plus, human medicine, medical education and health research make up our most rapidly growing economic sector – just take a walk up our Medical Mile to see this growth for yourself.

And yet, these comprise only a sliver of what makes our city so great – it is the people who live and work here who have made us who we are today and who have contributed to our success. We have been named as a Best City to Raise a Family and selected among the Top U.S. Destinations to Visit. We also have been recognized among the Most Exciting Midsized Cities and Best Places to Retire.

But don’t take my word for it – check it out yourself. The creative energy of our city – with its wonderfully diverse culture, vibrant downtown and dynamic neighborhoods – will inspire you. You will not find another city that matches our amenities and beautiful community spirit. Add to that the West Michigan friendliness of those who live and work here, and you will feel right at home.

On behalf of my colleagues at City Hall and all those who call Grand Rapids home, we hope you enjoy our city and have a wonderful time here and at the 2025 NEAFCS Annual Session!

Sincerely,

David LaGrand
Mayor, City of Grand Rapids

WELCOME FROM THE USDA

On behalf of the U.S. Department of Agriculture's National Institute of Food and Agriculture (NIFA), it's my honor to welcome you to the 2025 National Extension Association of Family & Consumer Sciences Annual Session.

At USDA NIFA, we are proud to support this premier event for Extension professionals throughout the nation and to support the conference's networking and professional development opportunities.

As the Division Director for NIFA's Division of Family & Consumer Sciences, my colleagues and I work to support several ongoing efforts to promote educator preparation for the next generation of family and consumer sciences professionals. I'm honored to serve today as a division director and help lead crucial grant programs that continue to shape the lives of young people across this great nation.

However, prior to my career with NIFA, I was in your shoes. My 41-year Land-grant Extension Service career spanned almost every position level. I know firsthand your work serves as a vehicle to develop better standards of living in the communities you serve.

USDA NIFA is truly fortunate to partner with the National Extension Association of Family & Consumer Sciences and each of you who work with USDA every day dedicated to enhancing the quality of life for individuals, families and communities.

Have a successful 2025 conference.

Dr. Martha Ray Sartor

Division Director
USDA National Institute of Food and Agriculture



National Institute of Food and Agriculture
U.S. DEPARTMENT OF AGRICULTURE

WELCOME FROM MSU EXTENSION



September 5, 2025

Dear National Extension Association of Family Consumer Sciences (NEAFCS) Colleagues,

On behalf of Michigan State University Extension, it is my distinct pleasure to extend a warm welcome to each of you as you gather in Grand Rapids for your annual meeting on October 20-23. We are thrilled to host such a vital group of professionals dedicated to enhancing the well-being of families and communities.

This year's theme, "SPARK connections, SPARK innovations, SPARK communities, and SPARK growth," perfectly encapsulates the transformative power of our collective work. Over the next few days, I encourage you to truly illuminate connections with one another, fostering new collaborations and strengthening existing bonds. Let your minds burn with innovative ideas, challenging conventional approaches and discovering fresh solutions. May you return home ready to radiate passion into your communities, inspiring positive change. And finally, I hope this conference allows you to shine bright with significant personal and professional growth.

Thank you for your dedication to Extension. We look forward to a productive and inspiring meeting!

Sincerely,

A handwritten signature in blue ink that reads "Quentin Tyler".

Quentin R. Tyler, Ph.D.
Director, MSU Extension
Senior Associate Dean of Outreach and Engagement
College of Agriculture and Natural Resources



MSU EXTENSION

Justin S. Morrill Hall
446 W. Circle Drive
East Lansing, MI 48824
Phone: 517-355-2308
Fax: 517-355-6574
msuedir@msu.edu

Michigan State University
Extension programs and materials
are open to all without regard to
race, color, national origin,
gender, gender identity, religion,
age, height, weight, disability,
political beliefs, sexual
orientation, marital status, family
status or veteran status.

Michigan State University, U.S.
Department of Agriculture and
counties cooperating.

NEAFCS HISTORY



ANNUAL SESSION 1986

*Marketing for Personal and
Professional Excellence*

AMYWAY GRAND PLAZA, GRAND RAPIDS, MICHIGAN OCTOBER 6-9, 1986

Marketing was the theme as NAEHE met in Grand Rapids, MI in 1986, with goals focusing on marketing Home Economic Education, developing and refining our personal marketing skills and exploring alternative delivery systems for Extension. Management Consultant Kinsey Bass Green, was the keynote speaker, supported by Larry Stanek and Charles Martin focusing on marketing consumer goods and Lois Juliber sharing marketing know how tips. Dr. Lois Light, National Cancer Institute provided an overview of Cancer prevention at the Kellogg Company sponsored breakfast.



The schedule for the 1986 conference was very different than the schedule we are using in 2025. Regional Business Meetings kicked off Annual Session at 7 p.m. Sunday night. Monday morning focused on state officer training and an open forum to meet the candidates. Exhibitor workshops were offered both during the day and evening on Monday, with Exhibits opening on Tuesday morning. Tuesday and Wednesday featured concurrent workshops, the business meeting and sponsored events.

NEAFCS HISTORY

Workshops on the mover were held Thursday, the final day of the conference, with the concluding event being the Awards presentation starting at 8 p.m.

A tour committee planned multiple tours for both before and after the conference, traveling the state, from Detroit, to Frankenmuth, to Grand Traverse Bay, to Chicago to Mackinac Island!

The eleven Voting Board Members included: Jane M. Taylor, President, Carrollyn Hunt, President-Elect, Margaret Meador, 1st Vice President, Betty Oliver, 2nd Vice President, Carmen Walgrave, 3rd Vice President, Lois Carlson, Secretary, Patricia Huff, Treasurer and Regional Directors Joyce Albrecht, Central, Alletta Schadler, Eastern, Mary Frances Arnold, Southern and Dorothy Thurber, Western.

NEAFCS 1986 BOARD OF DIRECTORS



GENERAL INFORMATION

ICON KEY



Wellness Activity



Award Winner



Ticket Required



Endowment Award



Meal Provided



Committee Track



Sponsor

REGISTRATION

Annual Session Registration is located on the 2nd floor of the Amway Grand Hotel, near the Center Concourse.

Sunday: 4:00 PM – 6:00 PM

Monday: 7:00 AM – 5:00 PM

Tuesday: 7:00 AM – 5:30 PM

Wednesday: 7:00 AM – 5:00 PM

Thursday: 7:00 AM – 12:00 PM

MESSAGE BOARD

A message board will be available near the Annual Session Registration Desk. You can utilize this board to share information on State's Night Out, photography appointments, ticket exchange, and other messaging needs.

HOSPITALITY

Stop by the Hospitality desk located next to the Registration Desk for your attendee gift.

HOSPITALITY HOURS:

Monday: 11:00 AM – 3:30 PM

Tuesday: 8:45 AM – 11:00 AM

hospitality desk open between concurrent sessions

Wednesday: 8:45 AM – 11:30 AM

hospitality desk open between concurrent sessions

11:30 AM – 1:00 PM

Thursday: 10:00 AM – 12:00 PM

EXHIBIT HALL

One day only this year – join us on Wednesday, October 22 from 11:30 AM – 5:30 PM to meet exhibiting companies and learn about the latest products and services. The Exhibit Hall is in the Secchia Foyer of the DeVos Place Convention Center.

The following activities are in the Exhibit Hall:

- Silent Auction
- Wednesday Lunch (11:30 AM – 1:00 PM)

EXHIBIT FORUMS

Hear from the exhibitors and learn about their products and services during their 30-minute presentation. For information on Exhibit Forum location and details, see page 54.

Wednesday: 12:45 PM – 5:00 PM

PHOTOS

Photos taken during the 2025 Annual Session will be available to download online within 30 days. To schedule a group picture, please sign up on the Message Board located next to the Annual Session Registration Desk.

CONTINUING EDUCATION/ PROFESSIONAL DEVELOPMENT UNITS

To learn more about approved CEUs and PDUs for the Annual Session, please visit the NEAFCS Annual Session website.



****NEW THIS YEAR****

REST AND RELAXATION ROOM

Visit the Ruby Room in the Amway Grand to unwind and recharge. The Rest and Relaxation Room is designed for quiet and comfort. It is a space to reflect, recharge and simply breathe.

WELLNESS ACTIVITIES

Join us on Tuesday, Wednesday, and Thursday morning for Wellness Activities to get your day started. Check the detailed schedule by day for start times and location.

Tuesday, October 21 – Morning Walk

Wednesday, October 22 – Tai Chi

Thursday, October 23 - Zumba

MARKETPLACE

Explore the Marketplace on Wednesday from 8:00 AM - 2:00 PM at the Center Concourse (2nd floor, Amway Grand). Discover handcrafted treasures from local artisans, including Native American beadwork, glassware, home decor, pottery, and more.

SILENT AUCTION & 50/50 RAFFLE

50/50 Raffle

The raffle will run throughout the conference, with the ticket reveal taking place at the close of the Exhibit Hall on Wednesday at 5:30 PM. You do not have to be present to win.

Donated Items

If you have a donated item for the Silent Auction, you may drop it off at the Silent Auction Desk during the hours listed below.

- **Sunday:** 4:00 PM – 6:00 PM
- **Monday:** 12:00 PM – 3:00 PM
- **Tuesday:** 10:30 AM – 11:30 AM
- **Wednesday:** 7:00 AM – 10:00 AM

Silent Auction Hours

- **Wednesday, October 22:** 11:30 AM to 5:30 PM

Final bids are due before the Silent Auction closes at 5:30 PM on Wednesday.

Winning Bid Item Announcement and Pickup

Thursday, October 23 at the Silent Auction Room in the Center Concourse of the Amway Grand.

- Winners Announced: 9:30 AM - 10:30 AM
- Item Pickup: 9:45 AM - 12:00 PM

SERVICE PROJECT

Support the 2025 NEAFCS Annual Session Service Project, Kids' Food Basket, aiming to achieve a hunger-free West Michigan in a way that promotes the experiences and passion of the local community.



You can help support Kids' Food Basket by:

- Donating – scan the QR code.
- Decorate a bag: You will see bags and markers at tables throughout Annual Session. Please decorate as many bags as you can! "Sack Suppers" are provided to kids in bags that you decorate, adding a colorful reminder that the community cares.

RECYCLING

In coordination with NEAFCS's efforts to go green, conference attendees are encouraged to recycle. Mixed recycling bins are located throughout the facility.

WIRELESS INTERNET

The DeVos Place Convention Center and the Amway Grand Hotel offer complimentary basic Wi-Fi in their meeting space.

2025 SCHEDULE

SUNDAY, OCTOBER 19, 2025

9:00 AM – 3:00 PM	National Pre-Board Meeting
11:45 AM – 6:00 PM	Pre Tour – Star of Saugatuck Boat Experience <i>(separate pre-purchase required)</i>
4:00 PM – 6:00 PM	Registration Open/ Silent Auction drop-off

MONDAY, OCTOBER 20, 2025

Meals provided: Dinner

7:00 AM – 5:00 PM	Registration Open
8:00 AM – 11:00 AM	Pre-Conference Workshops <i>(separate registration required)</i>
11:00 AM – 3:30 PM	Hospitality Desk Open
12:00 PM	Poster Setup for Showcase of Excellence Presenters
12:00 PM – 3:00 PM	Silent Auction Drop-off
1:00 PM – 2:15 PM	First Time Attendee Orientation
1:00 PM – 3:00 PM	Rest & Relaxation Room Open
2:15 PM – 3:15 PM	Affiliate Officer Meetings
3:30 PM – 5:45 PM	Opening General Session
6:00 PM – 7:00 PM	Bus Loading for Welcome Event

6:30 PM – 9:30 PM	Welcome Event <i>(offsite)</i>
9:45 PM	Last bus to return to the hotel

TUESDAY, OCTOBER 21, 2025

Meals provided: Lunch

School Pride Day! Wear your school shirt or colors. Comfortable clothing appropriate.

6:30 AM – 7:15 AM	Wellness Activity: River Walk
7:00 AM – 5:30 PM	Registration Open / Rest & Relaxation Room Open
8:00 AM – 10:45 AM	Concurrent Sessions
8:45 AM – 11:00 AM	Hospitality Desk Open <i>(between Concurrent Sessions)</i>
9:00 AM – 10:45 AM	Life Member Meeting
10:30 AM – 11:30 AM	Silent Auction Drop-off
11:00 AM – 1:00 PM	Regional Business Meetings & Awards Luncheon
1:30 PM – 5:30 PM	In-Depth Sessions <i>(separate registration required)</i>
1:30 PM – 5:30 PM	Exhibitor Set-Up
1:45 PM – 5:30 PM	National Program Leaders Meeting Day 1
5:30 PM – 7:00 PM	State Photos States Night Out

WEDNESDAY, OCTOBER 22, 2025

Meals provided: Lunch

6:15 AM – 7:15 AM	Wellness Activity: Tai Chi
7:00 AM – 10:00 AM	Silent Auction Drop-Off
7:00 AM – 11:00 AM	Exhibitor Set-Up
7:00 AM – 5:00 PM	Registration Open / Rest & Relaxation Room Open
8:00 AM – 11:30 AM	Concurrent Sessions
8:45 AM – 11:30 AM	Hospitality Desk Open <i>(between Concurrent Sessions)</i>
8:00 AM – 2:00 PM	Marketplace
8:00 AM – 4:15 AM	National Program Leaders Meeting Day 2
11:30 AM – 1:00 PM	Hospitality Desk Open
11:30 AM – 5:30 PM	Exhibit Hall Open <i>(lunch provided)</i>
11:30 AM – 5:30 PM	Silent Auction <i>(Last bid 5:30 PM)</i>
11:45 AM – 1:00 PM	National Program Leaders & Board Lunch
12:45 PM – 5:00 PM	Exhibit Forums
1:15 PM – 2:45 PM	Leadership Event <i>(invitation only)</i>
3:00 PM	Delegate Check-in for Annual Business Meeting

3:15 PM – 4:15 PM Showcase of Excellence Posters Staffed Time *(optional)*

3:15 PM – 5:15 PM Annual Business Meeting

5:30 PM Exhibitor and Showcase of Excellence Tear Down

5:45 PM – 6:45 PM State Photos

THURSDAY, OCTOBER 23, 2025

Meals provided: Breakfast, Reception

6:15 AM – 7:15 AM	Wellness Activity: Zumba
7:00 AM – 12:00 PM	Registration Open
8:00 AM	Showcase of Excellence Poster Display Tear Down <i>(must be down by 8:00 am)</i>
8:00 AM – 9:30 AM	Closing Session & Breakfast
9:30 AM – 10:30 AM	Silent Auction Winners Announced
9:45 AM – 12:00 PM	Silent Auction Pick-up
10:00 AM – 11:30 AM	National Post-Board Meeting
10:00 AM – 11:45 AM	Concurrent Sessions
10:00 AM – 12:00 PM	Hospitality Desk Open
11:45 AM	Lunch on own
12:00 PM – 2:00 PM	Past President's Luncheon
2:00 PM – 3:00 PM	President's Reception
3:00 PM – 5:00 PM	National Awards Ceremony

TUESDAY, OCTOBER 21, 2025

CONCURRENT SESSIONS AT A GLANCE

TRACK	8:00 AM - 8:45 AM	9:00 AM - 9:45 AM	10:00 AM - 10:45 AM
4-H and Youth Development		Expanding youth knowledge of food or wellness careers and educational opportunities utilizing the 4-H Food Challenge contest	
Committee	Share Your Spark by Submitting for an Online Professional Development Presentation	Access, Engagement, and Outreach in 2025	
Education, Leadership, and Diversity	AR2T Amplifying Reflective and Responsible Teaching	Public Health and Indigenous Communities	Buckeye Bookworms Book Club
	Oklahoma's Poverty Simulation Team - Sensitizing Others to Realities of Poverty - Mary W. Wells Memorial Diversity Award (Regional)		
	Mental Health Awareness for Everyone Across the State- Mary W. Wells Memorial Diversity Award (Regional)		
Environmental Health and Sustainability		A Collaboration Between Extension and the State Department of Health and Human Services: Responding to Calamitous Rural Weather Events	Creating a Healthier and Safer Home Environment by Reducing Sentimental Clutter
		Out of the Blue: Expecting the Unexpected - Extension Disaster Education Award	
Financial Health and Capability	Transferring Cherished Possessions: Estate Planning for Non-Titled Property		
Food and Nutrition	Healthy Eating and Staying Active as We Age - A Nutrition and Physical Activity Education Curriculum for Older Adults		Leveraging Partnerships Among Extension Programs to Build Food Safety Educational Capacity and Expand Industry Accessibility to Resources
	NourishSmart: Food Waste Reduction Program, Pilot Results		When Translating is Not Enough: Understanding Latino Food Preferences for Creating Effective Nutrition Education Resources
			Illinois Dial-Gauge Pressure Canner Testing Expansion
Health and Well-being	Helping Public School-Bus Drivers Pass Health Screening and Keep Employment	Using Story as a Superpower to Promote Mental Health and Social Connection	New Messaging for Farmers' Mental Health
	My Wellbeing: Enhancing Quality of Life for Adults with Intellectual and Developmental Disabilities	Collaborative Pathways: Sharing National Best Practices, Strategies, and Impacts for Walk with Ease	Reframing the Status Quo of Community-Based Programming for the Aging Demographic: Lessons from a Needs Assessment
		Strengthening Identity, Well-being, and Family Connection through Family History	A Path Forward for Diabetes Prevention and Management: Leveraging Multi-State Extension Programs for Greater Impact
Lifespan Development and Family Relationships	Day By Day Memory Disco: Supporting Dementia Care Partner Well-Being Through Silent Disco Technology	Farming and Social-Emotional Learning: What Does One Have to Do With the Other	Live Well, Age Well - Starting Now!
Skill-based	Expanding Existing Cooperative Extension Resources for Optimal Community Health Impact and Outcomes	Facilitation Initiative Intensive Training & Microcredentials	Maintaining New Tai Chi Skills Through Booster Sessions: A Transferable Model.
	Demonstrating the UTHOP Policy, Systems, and Environmental Change Strategy for Preventing Obesity in Rural Communities		

WEDNESDAY, OCTOBER 22, 2025

CONCURRENT SESSIONS AT A GLANCE

TRACK	8:00 AM - 8:45 AM	9:00 AM - 9:45 AM	10:00 AM - 10:45 AM	11:00 AM - 11:30 AM
4-H and Youth Development				4-H Family Dinner: Bringing Families to the Table
Committee	The Leadership Experience: Bridging Leadership Gaps	Awards: Updates You Need to Know	Blueprint for Publication: Navigating Manuscript Submission to the Journal of NEAFCS	
Economic and Workforce Development	Guidance for the Foodhandler on the management of HALAL Food	Fashion Entrepreneurship: Implications for Workforce Development in Extension Family Consumer Sciences		
Education, Leadership, and Diversity	Manage Your Spark to Ignite Your Passion and Power Your Potential	Mindful Management Solutions	Connecting the Dots from 1862 to 2025	
	Strong Dads - Mary W. Wells Memorial Diversity Award			
Environmental Health and Sustainability	Empowering the next generation: Community-based programs to teach young children about climate change			Connecting Sustainable Living "Zero-Waste" Practices to Improved Financial Well-Being
Financial Health and Capability	Eating Healthy on \$2/Meal/ Person (Part 1): Case Studies and the Thrifty Food Plan	Stepping Stones to Stability - Financial Management Award in Memory of Dean Don Felker	Eating Healthy on \$2/Meal/ Person (Part 2): Rethinking Food Affordability for our FCS Work	College Students, Student Loans, and Budgeting
Food and Nutrition		Harvest Extend: Reducing Food Waste and Increasing Access to Nutritious Foods by Processing Excess or Unacceptable Produce into Shelf-Stable Products for Donation to Food Pantries	Cottage Food Law & You	From Gleaning to Preserving: WSU Food Systems & Food Recovery Collaboration
		Empowering Communities Through Photovoice: Capturing Local Food Environment Concerns and Inspiring Change	Freeze Drying 101: Preparing Extension Professionals to Educate Clientele	Building Client-Centered Pantries: A Training Model for Adopting SWAP and Promoting Dignity in Food Access
				Libraries of Things Help Communities Preserve the Harvest
				The Recipe for Success: Resources for Aspiring Food Entrepreneurs
Health and Well-being	Changing our Mental and Emotional Trajectory (COMET)	One Village, United Vision, Defeating Diabetes Through Awareness and Education	Nourish your body: Assessing the results of an Extension outreach program delivered face-to-face or online	
	Addressing Stigma and other Barriers to Mental Health Care in Rural and Farming Communities Through a Statewide Collaborative		Empowering Rural Communities: A Research-Based Vaccine Toolkit to Combat Hesitancy	
	Effective Strategies for Facilitator Fidelity in an Evidence-Based Initiative		Connecting, Innovating, and Growing Stronger Communities of Support for Alzheimer's and Dementia Caregivers	

continued

WEDNESDAY, OCTOBER 22, 2025, CONTINUED

TRACK	8:00 AM - 8:45 AM	9:00 AM - 9:45 AM	10:00 AM - 10:45 AM	11:00 AM - 11:30 AM
Lifespan Development and Family Relationships	Nurturing New Beginnings: The Impact of Extension Prenatal Education on Expectant Parents in Utah	Resilient Co-Parenting: A Statewide Approach for a Monthly Virtual Class Series that Recognizes the Evolving Nature of Co-Parenting Relationships	Age-Friendly Ocean County: The Development of a Multisector Plan on Aging	
		The Power of Family Meals: A Collaborative Effort for Healthier Families	Empowering Parents: Developing an Online Vaping Education Program to Support Parental Involvement	
Skill-Basesd	Reframing Aging in Cooperative Extension: Tools and Resources for Extension Professionals	Do you need an MOU?	Empowering FCS Extension through the Military Family Readiness Academy	
Technology		Elevate Couples Georgia: Promoting Healthy Relationships Through Social Media - Social Media Education Award	Bridging the Digital Divide in Socio-Economically Disadvantaged Communities in the South	Adapting our Web Presence to Generative Artificial Intelligence Queries
		Future Ready: Career Exploration Powered by Virtual Reality		
Trending Topics	The Impact of FCS: Overview of AAFCS FCS Industry Research Study			What Is Old Can Be New Again: Using Generative Artificial Intelligence to Modernize Curricula and Educational Materials
				SNAP Retailer Application Process Deconstructed for Quick and Easy Success Assisting Non-Profits, Farmers, and Markets

THURSDAY, OCTOBER 23, 2025

CONCURRENT SESSIONS AT A GLANCE

TRACK	10:00 AM -10:45 AM	11:00 AM -11:45 AM
4-H and Youth Development		Cardio Drumming for Youth - Innovative Youth Development Programming Award
Economic & Workforce Development	Poverty Simulations - Forging New Partnerships in Oklahoma - Community Partnership Award	
Education, Leadership, and Diversity	Attracting SNAP-Ed Eligible Older Adults to an Extension Health Program: Educators' Perspectives of Promising Practices, Systemic Barriers, and Opportunities	Time to Talk - Program Excellence Through Research Award
		Sparkling Inclusivity: Enhancing Extension Services for LGBTQIA2S+ Individuals
Financial Health and Capability	Awareness of Trauma's Impact on Financial Wellness: Understanding, Addressing, and Overcoming Barriers	Partnering with Employers to Address Family Financial Security
Food and Nutrition	Kombucha Crafting at Home - Food Safety Award	"Plan, Prep, Preserve: Your Path to Saving Food and Money" Household Food Waste Reduction Toolkit: A Resource for Educators
	Safe Food = Healthy Kids	Ensuring Food Safety and Entrepreneurial Success: The University Extension Cottage Food Safety Training for Compliance, Risk Reduction, and Resilient Food Systems
	Oh Deer! Addressing Food Insecurity in Rural Communities through Deer Donation	
Health and Well-being		Promoting Personal Safety Through the Empower Yourself Through Self-Defense Toolkit
	Harnessing the Power of Awe: Dark Skies as Tools for Mental Health in Rural Communities	Bridging the Gap: An Innovative EFNEP Model for Bolstering Adult Immunization Education
Lifespan Development and Family Relationships	Are Your Participants Doing Their FCS Homework?	Build Your Bones: A Multi-State Virtual Initiative
Skill-based	Master Clothing Volunteer Hospice Quilt Project - Master FCS Volunteer Program Award	
Technology		Digital Volunteer Initiate
Trending Topics	SPARKing the Future of Extension: Insights From A Longitudinal Content Analysis of FCS Extension Positions	Branding Extension Programs in Urban Communities

PRESIDENT'S CHARITY & SERVICE PROJECT

Support the NEAFCS Awards Fund – This Year's President's Charity

CELEBRATING EXCELLENCE, INSPIRING GROWTH.

Each year, NEAFCS members go above and beyond to make a difference in their communities. The NEAFCS Awards Fund ensures that we can continue recognizing excellence and innovation among our peers through meaningful awards and scholarships.

I have selected the NEAFCS Awards Fund as this year's President's Charity. Your generosity will help sustain and grow award opportunities that celebrate the outstanding work of our members.

Ways to Give:

- During Annual Session: Stop by the registration desk with cash or a check made payable to NEAFCS Awards Fund
- Mail: Send a check payable to the NEAFCS Awards Funds, to the National Office.

Every contribution—big or small—makes a lasting impact. Together, let's ensure the excellence of our profession is recognized for years to come!

Sincerely,

Jennifer Bridge, NEAFCS President



More than 38,000 children in Kent, Muskegon, Ottawa and Allegan counties experience food insecurity. Together, we can do something about it!

Every dollar counts. NEAFCS support ensures that students go home from school with a healthy evening meal from KFB.

- \$10 can provide a daily serving of dairy to a child for two months.
- \$15 can provide a child healthy evening meals for an entire school week.
- \$25 can provide a serving of fresh fruit in Sack Suppers for an entire school.
- \$50 can provide a child healthy evening meals for an entire month.
- \$100 can provide two classrooms with nutrition education that empowers kids to try fresh produce.

Every meal matters.

Your generosity ensures West Michigan's next generation has access to good food, good health and a good future.



ART PRIZE



Find *Art Prize* permanent installations at

Raining Wisdom: 45 Ottawa Ave NW

The G-Rap Map: 33 Sheldon Ave NE

Sing with Me: Next to the G-Rap Map

Imagine That: Grand Rapids Children's Museum wall (by Sing with Me)

MetaPhorest: 98 Fulton St (West Michigan Center for Arts and Technology)

Aztlan: 118 Fulton St E (across from MetaPhorest)

Timeless: 18 LaGrave Ave SE

Seeking a Pleasant Peninsula: 132 Monroe Center St NW

Clans of the Anishinaabek: 50 Front Ave SW

www.artprize.org



NEAFCS ENDOWMENT FUND



NEAFCS Endowment Fund at a Glance

	Money raised	\$6,435
	First-time donors	NINE
	Repeat donors	26
	Monthly sustaining donors	TWO
	Affiliate or group donations	TWO
	Memorial Donors (4)	\$1,690
	Honorary Donations (6)	\$475
	Grant funding (3)	\$8,998
	Annual Session Scholarships (19)	\$8,998

On behalf of your Endowment Fund Committee, thank you for your ongoing financial support. The above information is from September 1, 2024 to July 31, 2025. Many thanks for helping “pay it forward!” For more information on the endowment and/or to make a contribution, visit www.neafcs.org/endowment-for-the-future.

2025 ANNUAL SESSION AGENDA

SUNDAY, OCTOBER 19, 2025

9:00 AM – 3:00 PM

National Pre-Board Meeting

ROOM: VANDENBERG A, 2ND FLOOR

4:00 PM – 6:00 PM

Registration Desk Open/Silent

Auction Drop Off

**AMWAY GRAND REGISTRATION DESK
(CENTER CONCOURSE 2ND FLOOR)**

11:45 AM – 6:00 PM



**Pre Tour – Star of Saugatuck
Boat Experience**

Bus loads at 11:45 AM. Bus departs at 12:00 PM. Buses will load on Lyon Street Entrance of the Amway Grand Hotel
(separate pre-purchase required)

Leaf and Seek Grand Rapids



Box Elder

Leaves turn a dull yellow



Black Cherry

Leaves turn bronze, gold and brown and may have red or black fruit



Mulberry

Leaves turn yellow, orange or red



Red maple

Leaves are brown, red, copper, burgundy, yellow or gold



Common sassafras

Leaves have showy autumn colors

MONDAY, OCTOBER 20, 2025

MONDAY SCHEDULE AT A GLANCE

7:00 AM – 5:00 PM	Registration Desk Open
8:00 AM – 11:00 AM	Pre-Conference Workshops (<i>Separate registration required</i>)
11:00 AM – 3:30 PM	Hospitality Desk Open
12:00 PM – 3:00 PM	Silent Auction Drop-Off
12:00 PM	Showcase of Excellence Poster Set-up
1:00 PM – 2:15 PM	First Time Attendee Orientation
1:00 PM – 3:00 PM	Rest & Relaxation Room Open
2:15 PM – 3:15 PM	Affiliate Officer Meetings
3:30 PM – 5:45 PM	Opening General Session
6:30 PM – 9:30 PM	Welcome Event

7:00 AM – 5:00 PM
Registration Desk Open
 AMWAY GRAND
 REGISTRATION DESK
 (CENTER CONCOURSE 2ND
 FLOOR)



7:00 AM – 7:45 AM
Continental Breakfast

for pre-conference workshop
 participants only.

**BREAKFASTS LOCATED
 ADJACENT TO THE
 WORKSHOP ROOM**



**Get Involved –
 Join an NEAFCS
 Committee!**

**LOOKING FOR WAYS TO CONNECT,
 CONTRIBUTE, AND GROW YOUR
 LEADERSHIP SKILLS?**

NEAFCS Committees are the heart of
 our association—driving ideas, shaping
 programs, and supporting members.

Stop by the Exhibit Hall on Wednesday
 to learn more about each committee,
 explore their upcoming action plans,
 and discover where your skills and
 passion fit best!

PRE-CONFERENCE WORKSHOPS

MONDAY, OCTOBER 20, 2025

8:00 AM – 11:00 AM



Capture the Flavor: Herbs & Spices

Presenter: Shauna Henley Ph.D., University of Maryland Extension

ROOM: VANDENBERG A, 2ND FLOOR

Be trained to deliver Capture the Flavor: Herbs & Spices. This program is a science-based, 75-minute program that takes participants on a culinary journey through the history and cultural use of herbs and spices in food preparation. It provides cooking tips, information on best storage and food safety practices, and the health benefits of herbs and spices. Validated pre-post survey tools are used to evaluate participant's knowledge and behavior change.

The program has the flexibility to be taught in-person or virtually, by Agents or their interns/volunteers. Capture the Flavor: Herbs & Spices was accepted by Maryland's peer-reviewed system. Agents from three land-grant universities have received training and are teaching Capture the Flavor: Herbs & Spices in their communities.

NOTE: For agents holding a CITI Program Social & Behavioral Research – Basic/Refresher. A similar human subjects research course can be substituted. Such course titles include:

- Social-Behavioral-Educational (SBE) Basic
- IRB Investigators & Student Researcher

Learning Objectives:

- Provide an overview of the program.
- Observe an activity demonstration and taste some different 'herb and spice flavored' international cuisines.
- Practice delivering different components of the curriculum.



MONDAY PRE-CONFERENCE WORKSHOPS, CONTINUED



The Personal Finance Ecosystem and K-12 Financial Education: Implications for Extension Educators

Presenters: *Hunter Field, National Endowment for Financial Education; Mary Hoch, Director of Thought Leadership Initiatives*

ROOM: EMERALD B, 2ND FLOOR



Field

This is a two-part session focusing on financial education and its intersection with extension educators. The first section will focus on NEFE's Personal Finance Ecosystem, a nuanced framework mapping the various factors that impact an individual's financial well-being. This section will explore the ecosystem, its applicability to extension education, and various accompanying tools that educators can use in their work and with their students. The second section will analyze developments in K-12 financial education policy, as a wave of momentum nationwide has led to changes in state education policy, expanding access to financial education for youth. This section will



Hoch

focus on state graduation requirements, their implementation, and how extension educators can be involved in this process as advocates and potentially also as subject matter experts.

Learning Objectives:

- Attendees will learn how to understand the Personal Finance Ecosystem and how to apply the framework to their students or clients.
- Attendees will learn what current research demonstrates about state-required financial education.
- Attendees will discuss what K-12 financial education's momentum might mean for extension educators and how they might get involved in this process in their state.

MONDAY PRE-CONFERENCE WORKSHOPS, CONTINUED



Igniting Innovation in Aging Across Extension

Presenters: *Leacey Brown, Chelsey Byers, Christi Demitz, James Keys, Erin Martinez, Sara Richie, Kathy Tutt, and Ginger Williams; North Central Region Aging Network*

ROOM: *VANDENBERG B, 2ND FLOOR*



NORTH CENTRAL REGION
Aging Network

This pre-conference session will provide attendees with a comprehensive overview of North Central Region Aging Network's (NCRAN) resources, initiatives, and the latest aging-related research and practice advancements. The session will begin with an introduction to NCRAN, highlighting its mission, membership, and the diverse range of resources available to Extension professionals across the country. Attendees will gain insights into ongoing aging-related direct education programs, including program design and evaluation outcomes.

To foster collaboration and idea sharing, a speed networking session will be held, allowing participants to connect with colleagues from various backgrounds and expertise. Following the networking session, attendees will engage in a World Café discussion to explore the application of Policy, Systems, and Environmental Change (PSE) principles to address aging-related challenges. The session will conclude with a report-out from the World Café, summarizing key insights and potential collaborative opportunities.

Learning Objectives:

- As a result of attending this pre-conference, attendees will improve their awareness of NCRAN, its resources, aging-related direct-education programs, and shared evaluation.
- As a result of attending this pre-conference, attendees will establish at least one new connection with an NCRAN member or colleague leading to resource sharing and innovation.
- As a result of attending this pre-conference, attendees will be able to identify and discuss potential PSE strategies that can be implemented via Extension to address specific aging-related challenges and opportunities.
- As a result of attending this pre-conference, attendees will develop at least one innovative idea for a future direct-education program or PSE initiative related to aging.

11:00 AM – 3:30 PM

Hospitality Desk Open

AMWAY GRAND REGISTRATION DESK
(CENTER CONCOURSE 2ND FLOOR)

12:00 PM – 3:00 PM

Silent Auction Drop-off

AMWAY GRAND REGISTRATION AREA
(CENTER CONCOURSE 2ND FLOOR)

12:00 PM

Showcase of Excellence Poster Set-Up

AMWAY GRAND CENTER CONCOURSE

1:00 PM – 2:15 PM

First Time Attendee Orientation

ROOM: PANTLIND BALLROOM, 2ND FLOOR

This meeting is open to first time Annual Session attendees only. Food/lunch will not be provided.

1:00 PM – 3:00 PM

Rest & Relaxation Room Open

ROOM: RUBY, 2ND FLOOR

2:15 PM – 3:15 PM

Affiliate Officer Meetings

These meetings are open to Affiliate Officers and/or delegated representatives for all positions. Rooms are located on the 2nd floor.

PRESIDENTS – ROOM: IMPERIAL BALLROOM

TREASURERS – ROOM: VANDENBERG A

AWARDS VP – ROOM: VANDENBERG B

MEMBER RESOURCES VP – EMERALD A

PROFESSIONAL DEVELOPMENT VP – EMERALD B

PUBLIC AFFAIRS VP – PEARL

3:30 PM – 5:45 PM

Opening General Session with Keynote, Joseph V. Sowmick, Hon Ph.D

ROOM: BALLROOM AB – DEVOS PLACE CONVENTION CENTER, STREET LEVEL

See page 29 for more information about our Keynote.

6:30 PM – 9:30 PM

Welcome Event at the Meijer Gardens

BUSES LOAD AT THE MONROE AVE. ENTRANCE OF THE DEVOS PLACE CONVENTION CENTER STARTING AT 6:00 PM. SERVICE RUNS ON A LOOP. LAST BUS LEAVES THE GARDENS AT 9:45 PM.

Delight your senses at the welcome event as you stroll through the greenhouses of the Frederik Meijer Gardens, taking in the sights and scents of tropical and arid gardens, art installations, seasonal displays and more! Savor a variety of delicious offerings at multiple food stations while enjoying the enchanting sounds of Celtic music, performed by the talented youth of the Chelsea House Orchestra in both small and large ensembles. Before you leave, don't miss the charming gift shop - brimming with unique, specialty items perfect for bringing a piece of the experience home with you! Card payment accepted only.

This event is open to all full registered attendees and those that purchased the Welcome Event ticket. Grazing stations will be provided.



OPENING GENERAL SESSION KEYNOTE

Monday, October 20 | 3:30 PM – 5:45 PM

ROOM: BALLROOM AB – DEVOS PLACE CONVENTION CENTER

Finding our Spark: Traditional Approaches to Cultural Health Literacy

Joseph V. Sowmick, Hon Ph.D.

Learn about finding the spark for your work in Extension through a traditional lens. Traditional teachings begin with the spark that starts the sacred fire - requiring an open mind, listening, and connecting with your community. Once the sacred fire is burning, we must feed it, and when it is lacking, we must figure out how to help it. Examine the themes of connection, innovation, community, and growth through the intersection of traditional Medicine Wheel teachings and how this applies to our work in Family and Consumer Sciences.

Through the wisdom of Medicine Wheel teachings, you'll explore:

- How to kindle the spark that drives meaningful community engagement
- Ways to nurture and sustain programs that truly resonate with your audience
- Practical strategies for revitalizing initiatives that need renewed energy



“Traditional teachings begin with the spark that starts the sacred fire - requiring an open mind, listening, and connecting with your community.”

OPENING GENERAL SESSION AGENDA

Monday 3:30 PM – 5:45 PM

Opening Slideshow

Virtual Parade of States by Regional Directors

Welcome

Courtney Aldrich, Samantha Roth, Melissa J. Rupp

NEAFCS Central Region Tri-Liaisons

Pledge of Allegiance

Courtney Aldrich

National Anthem

Keeley Boyd of the Country Cowboys 4-H Club

NEAFCS Creed

Melissa J. Rupp

Greetings

Jennifer Bridge, NEAFCS President

Cheryl Eschbach, PhD, Health and Nutrition Institute Director for Michigan State University Extension

Susan Moore, NEAFCS VP for Professional Development

AAFCS/FCS Alliance Presentation

Karin Athanas, AAFCS Executive Director

USDA/NIFA Presentation

Dr. Martha Ray Sartor, Division Director, Division of Family and Consumer Sciences

JCEP Presentation

Rick Griffiths, NEAFCS Immediate Past President

Candidate Introductions

Rick Griffiths, NEAFCS Immediate Past President and Nominating Committee Chair

NEAFCS Recognition

2024-2025 NEAFCS Affiliate Leaders, Past National Presidents, and National Executive Board

Journal of NEAFCS Contributors

Sponsor & Donor Recognition

President's Charity

Carrie Elsen, NEAFCS Leadership Experience Chair: 2025 Class

Cindy Thompson, Secretary, Ambassador Committee Liaison

Keynote Presentation

Ignite Your Annual Session Experience, Finding Our Spark:

Traditional Approaches to Cultural Health Literacy

Joseph V. Sowmick, Hon Ph.D.

Service Project

Courtney Aldrich

Announcements & Closing

THANK YOU TO OUR 2024-2025 OUTGOING BOARD MEMBERS

Courtney Aldrich – *Annual Session Tri-Liaison*

Samantha Roth – *Annual Session Tri-Liaison*

Melissa J. Rupp – *Annual Session Tri-Liaison*

Barb Wollan – *Central Region Director*

Samantha Kennedy – *Southern Region Director*

Christine Zellers – *Vice President Public Affairs*

Donna Jung – *Vice President Awards & Recognition*

Lance Hansen – *Treasurer*

Dianne Christensen – *President-Elect*

Rick Griffiths – *Immediate Past President*

Jennifer Bridge – *President*



FOR EDUCATORS,
**A VIRTUAL PROFESSIONAL
DEVELOPMENT PLATFORM**
www.oneop.org

Our free, research-based webinars, courses,
and podcast are designed to provide you
with ongoing growth and development.

Visit OneOp.org to learn more.

This material is based upon work supported by the
National Institute of Food and Agriculture, U.S.
Department of Agriculture, and the Office of Military
Family Readiness Policy, U.S. Department of Defense
under Award Number 2023-48770-41333.



American Income
life insurance company

Special Risk Division

The AIL Special Risk Division has specialized in
providing blanket group accident coverage for 4-H
and Cooperative Extension programs since 1952.

Our motto is "Serving Those Who Serve Others"
and our partnership with NEAFCS is a key part of
how we live up to that.

Contact Erin Bain, AIL SRD Director for more
information about protecting your program!

efbain@aillife.com

CENTRAL REGION ANNUAL SESSION

COMMITTEE MEMBERS

The Tri-laisons would like to extend a giant thank you to our committees! The Central Region was represented throughout the planning process of this Annual Session and we hope you enjoy our joint efforts to find your SPARK in Grand Rapids. We would also like to acknowledge the loss of our SNAP-Ed colleagues who have been a part of NEAFCS for 35 years and helped to plan this Annual Session. Thank you not only for your work in nutrition education, but also for the time and energy you have given to NEAFCS — your impact has been significant and lasting.

PRE-CONFERENCE SESSIONS

Chair: Kate Shumaker, OH
David Brown, IA
Sara Croymans, MN
Joanna Urban, MI
Amanda Bohlen, OH
Robin Eubank-Callis, KS

MARKETING

Chair: Lisa Peterson, IL
Emma Horstman, OH
Katie Thompson, ND
Diane Rienhold, IL
Kris Juelfs, IL
Chelsey Byers, IL

HOSPITALITY

Chair: Shelley Frazier, MI
Co-Chair: Kyleigh Brown, MO
Jamie Jo Lowder, IN
Danielle Dinger, ND
Whitney Keller-Reets, SD
Staci Coussens, IL
Karen Fifield, MI

MARKETPLACE

Chair: Candace Heer, OH
Megan Saloman, IN
Kellie Jordan, MI
Kristin Bagdonas, IL
Glenda Garcia, AZ
Betty (Yaohua) Feng, IN

LEADERSHIP EVENT

Chair: Danielle Day, IA
Carrie Elsen, MO
Cindy Thompson, IA
Dawn Contreras, MI

FUNDRAISING

Chair: Caitlin Mellendorf, IL
Co-Chair: Christi Demitz, MI
Betty Feng, IN
Stacey Stangel, OH
Saneya Moore, MI

TOURS

Chair: Misty Harmon, OH
Susie West, MN
Christine Venema, MI
Jennifer Little, OH
Donna Peterson, WI

IN DEPTH SESSIONS

Chair: Kara Lynch, MI
Co-Chair: Marcia Parcell, IN
Georgina Guzman, MI
Sandra Westover, MI
Audrey Rider, SD
Anna Sneltsjes, MN
Elizabeth Schweigert, OH
Laura Anderson, MI
Jenny Abel, WI

DECORATIONS

Chair: Dana Stanley, IN
Co-Chair: Emily Harmon, IL
Rachel Mannen, IL
Katie Schlagheck, OH
Brittani Schori, IN
Caitlin Matthews-Smith, OH
Megan Taylor, OH
Christine Venema, MI

WELLNESS

Christi Demitz, MI
Elisabeth Fleury, MI
Jami Dellifield, OH

OPENING AND CLOSING SESSION

Chair: Stephanie Ostrenga Sprague, MI
Co-Chair: Caroline Everidge, IN
Lorna Saboe-Wounded Head, SD
Candace Heer, OH
Cheryl Kleckner, OH
Katie Gellings, WI

WELCOME EVENT

Saneya Moore, MI
Susan Zies, OH
Jo Gilreath, IN
Carmen Fortney, IN
Cheri Burcham, IL
Juliana Wickline, OH
Sara Richie, WI
Joanna Urban, MI

AUDIO VISUAL

Chair: Emily Marrison, OH
Co-Chair: Carrie Shrier, MI
Viviana Guzman, IN
Nicole Wethington, MI
Nicole Lehr, MI
Alan Pilkenton, MI

REST AND RELAXATION ROOM

Chair: Patrice Powers-Barker, OH
Carrie Shrier, MI
Sandra Westover, MI
Anne O'Rourke Bean, MI
Nicole Wethington, MI
Tanner Derror, MI

TUESDAY, OCTOBER 21, 2025

SCHOOL PRIDE DAY! Wear your school shirt or colors.

TUESDAY SCHEDULE AT A GLANCE

6:30 AM – 7:15 AM	Wellness Walk
7:00 AM – 5:30 PM	Registration Desk Open
7:00 AM – 5:30 PM	Rest & Relaxation Room Open
8:45 AM – 11:00 AM	Hospitality Desk Open (<i>Hospitality Desk will be open between concurrent sessions</i>)
8:00 AM – 10:45 AM	Concurrent Sessions
9:00 AM – 10:45 AM	Life Member Meeting
10:30 AM – 11:30 AM	Silent Auction Drop-Off
11:00 AM – 1:00 PM	Regional Business Meetings & Awards Luncheon
1:30 PM – 5:30 PM	In-Depth Sessions
1:30 PM – 5:30 PM	Exhibitor Set-Up
1:45 PM – 5:30 PM	Program Leaders Meeting – Day 1 (<i>separate registration required</i>)
5:30 PM – 7:00 PM	State Photos
5:30 PM or after	States Night Out

TUESDAY



6:30 AM – 7:15 AM

Wellness Activity – Wellness Walk

1 mile walk inside the above ground tunnels.

MEET AT 6:30 AM AT THE ENTRY TO THE SKYWALK IN THE AMWAY GRAND (NEAR THE GRAND PIANO).

7:00 AM – 5:30 PM

Rest & Relaxation Room Open **ROOM: RUBY, 2ND FLOOR**

8:45 AM – 11:00 AM

Hospitality Desk Open – between concurrent sessions
AMWAY GRAND REGISTRATION AREA (CENTER CONCOURSE 2ND FLOOR)

7:00 AM – 5:30 PM

Registration Desk Open
AMWAY GRAND REGISTRATION DESK (CENTER CONCOURSE 2ND FLOOR)

CONCURRENT SESSIONS

8:00 AM – 8:45 AM

AR2T Amplifying Reflective and Responsible Teaching

Track: Education, Leadership, and Diversity
Presenter(s): Courtney Aldrich, Althea Wilson, Karen Brenner

STATE: MI

ROOM: EMERALD A, 2ND FLOOR

Explore AR2T (Amplifying Reflective and Responsible Teaching), a resource developed in collaboration with Extension, an early childhood specialist, and a pediatrician that supports delivering an educational experience in preschool classrooms that fosters belonging for all.

Day By Day Memory Disco: Supporting Dementia Care Partner Well-Being Through Silent Disco Technology

Track: Lifespan Development and Family Relationships
Presenter(s): Kathy Tutt, Kenneth Stewart, Kaylie Glenn, Gwynn Stewart

STATE: OH

ROOM: IMPERIAL BALLROOM, 1ST FLOOR

Caregiver stress and burnout in memory care is a critical concern. The Memory Disco Program introduces an innovative solution combining silent disco technology with musical engagement to address these challenges.

Demonstrating the UTHOP Policy, Systems, and Environmental Change Strategy for Preventing Obesity in Rural Communities

Track: Skill-based
Presenter(s): Melinda Spooner, Karen Franck

STATE: TN

ROOM: GRANDVIEW BC, 3RD FLOOR

The UTHOP strategy for supporting rural communities in sustainably increasing access to healthy food and safe places for physical activity using policy, systems, and environmental change to prevent obesity.

Expanding Existing Cooperative Extension Resources for Optimal Community Health Impact and Outcomes

Track: Skill-based
Presenter(s): Chris Zellers, Rachel Tansey

STATE: NJ

ROOM: THRONAPPLE, 3RD FLOOR

Using two established and successful Extension programs, FCS professionals incorporated education and messaging about Flu and Shingles vaccinations for knowledge and behavior change opportunities to expand Community Health outreach

Healthy Eating and Staying Active as We Age - A Nutrition and Physical Activity Education Curriculum for Older Adults

Track: Food and Nutrition
Presenter(s): Johanna Hahn, Camille McGuire, Elena Serrano, Anne-Carter Carrington, Jeanell Smith, Sarah Misyak

STATE: VA

ROOM: VANDENBERG B, 2ND FLOOR

Healthy Eating and Staying Active as We Age – A nutrition and physical activity curriculum comprised of nine learner-centered lessons was created for older adults.

Helping Public School-Bus Drivers Pass Health Screening and Keep Employment

Track: Health and Well-being

Presenter(s): Rebecca Elliott

STATE: FL

ROOM: EMERALD B, 2ND FLOOR

This presentation depicts how a Health Program Helped Public School-Bus Drivers Pass Health Screening and Keep Employment.



**Mary W. Wells Diversity Award –
Regional Winners Co-Presentation**

Track: Education, Leadership, and Diversity

ROOM: GRAND VIEW A, 3RD FLOOR

Mental Health Awareness for Everyone Across the State

Presenter(s): Anna Goff, Alta Lockley, Alison Crane, Anna Harlan, Bridgett Martin, Brittney Schrick, Christie Wagley, Christin Holmes, Danielle Watson, Devyn Britt, Elizabeth Berner, Emilee Moody, Eva Langley, Janet Perkins, Jessica Holcomb, Jessica Rodriguez, JoAnn Vann, Joy West, Kaitie Golden, Karalee Black, Katie Cullum, Kris Boulton, LaTaaka Harvey, Laura Grutz, Laura Hendriz, Lauren McGarrh, Lucretia McAlister, Mary Ann Kizer, Mary Beth Groce, Mattie Ricker, Pamela Pruett, Pamela Ray, Pia Woods, Rachel Chaney, Shannon Autrey, Shaw nee Tichenor, Susan Thomason, Terrie James, Tori Fowler, Tori Luker, Trudy McManus, Terrie James

STATE: AR

By integrating mental health awareness with a focus on diversity, Extension Services strive to create inclusive environments that support the well-being of all community members.

Oklahoma's Poverty Simulation Team - Sensitizing Others to Realities of Poverty

Presenter(s): Kathy Enyart, Suzette Barta, Trinity Brown, Jan Dawson, Stacey Dawson, Riley DuBois, April Hauenstein, LaDonna Hines, Janna Kelley, Rachel Lockwood, Sonya McDaniel, Brenda Miller, Lindy Peterman, Dea Rash, Kelsey Ratcliff, Lesa Rauh, Susan Routh, Virginia Stanley, Heather Winn

STATE: OK

A poverty simulation seeks to improve the situation of families in poverty by sensitizing service providers to their clientele's situation. Oklahoma has developed a team approach to this program's delivery.

My Wellbeing: Enhancing Quality of Life for Adults with Intellectual and Developmental Disabilities

Track: Health and Well-being

Presenter(s): Debra Sellers, Kimberly Wellauer Cavalier, Jeannette Mukayisire

STATE: IA

ROOM: HALDANE, 3RD FLOOR

The 'My Wellbeing' program enhances wellbeing for adults with intellectual and developmental disabilities through health education, experiential learning, and community partnerships. The aspiration is the creation of supportive environments within Extension programs.

NourishSmart: Food Waste Reduction Program, Pilot Results

Track: Food and Nutrition

Presenter(s): Palak Gupta, Bekka Israelsen, Kelsey Romney, Carson Johnson

STATE: UT

ROOM: PEARL, 2ND FLOOR

NourishSmart equips educators with peer-reviewed resources to teach food waste concepts in schools. Training significantly improved educator knowledge and intent to integrate curriculum, demonstrating NourishSmart's potential to reduce food waste.



Share Your Spark by Submitting for an Online Professional Development Presentation

Track: Committee

Presenter(s): Candace Heer, Susan Moore

STATE: MULTI-STATE

ROOM: NELSON, 3RD FLOOR

Attending this presentation will prepare members to navigate the application process to submit a proposal for an online professional development presentation.

Transferring Cherished Possessions: Estate Planning for Non-Titled Property

Track: Financial Health and Capability

Presenter(s): Nichole Huff

STATE: KY

ROOM: VANDENBERG A, 2ND FLOOR

This session introduces the FCS Extension program, Transferring Cherished Possessions, a four-lesson curriculum and Extension publication series designed to increase consumer knowledge of estate planning for non-titled property.

8:45 AM - 9:00 AM

Hospitality Desk Open

**AMWAY GRAND REGISTRATION AREA
(CENTER CONCOURSE 2ND FLOOR)**

9:00 AM – 10:45 AM

Life Member Meeting

ROOM: OTTAWA ROOM, 1ST FLOOR

CONCURRENT SESSIONS

9:00 AM – 9:45 AM

A Collaboration Between Extension and the State Department of Health and Human Services: Responding to Calamitous Rural Weather Events

Track: Environmental Health and Sustainability

Presenter(s): David Brown, Danielle Day, Tammy Jacobs

STATE: IA

ROOM: VANDENBERG A, 2ND FLOOR

The collaborative response by Extension and state Health and Human services to rural weather events is highlighted. The implementation/outcomes of responsive education and crisis counseling will also be reviewed.



Access, Engagement, and Outreach in 2025

Track: Committee

Presenter(s): Deon Littles, Laura Stanton, Kyleigh Brown, Lorrie Coop, Maranda Brooks, Darlene Minniefield, Flora Williams, Shailja Mathur, Diana Romano, Courtney Aldrich, Carla Carter, Silvia Vilches

STATE: MULTI-STATE

ROOM: GRAND VIEW BC, 3RD FLOOR

Explore how Extension professionals are navigating political, social, and cultural shifts, sharing local innovations and resources to strengthen inclusive, impactful community engagement and outreach across varied communities.

Collaborative Pathways: Sharing National Best Practices, Strategies, and Impacts for Walk with Ease

Track: Health and Well-being

Presenter(s): Dianne Christensen, Tandy Rundus, Sharolyn Jackson, Sally Bowman

STATE: MULTI-STATE

ROOM: PEARL, 2ND FLOOR

Arthritis Foundation's Walk with Ease program impacts, delivery formats, training opportunities, and implementation will be presented. Best practices and case studies will also be shared.

Expanding youth knowledge of food or wellness careers and educational opportunities utilizing the 4-H Food Challenge contest

Track: 4-H and Youth Development

Presenter(s): Andrea Haubner, Kasey Fioramonti

STATE: VA

ROOM: VANDENBERG B, 2ND FLOOR

Professionals will learn how to implement annual programming utilizing 4-H Food Challenge contest structure and develop strategies for expanding the curriculum to educate youth on food, and health related careers.

Facilitation Initiative Intensive Training & Microcredentials

Track: Skill-based

Presenter(s): Robin Eubank-Callis, Deborah Kohl

STATE: KS

ROOM: GRAND VIEW A, 3RD FLOOR

Create spaces of neutrality for facilitated community dialogues. Focus on setting shared expectations, utilizing effective strategies, incorporating productive behaviors, and formulating dialogue-expanding questions. Learn about available microcredentials.

Farming and Social-Emotional Learning: What Does One Have to Do With the Other

Track: Lifespan Development and Family Relationships

Presenter(s): Marie Economos, Pam Perrino, Heather Reister

STATE: OH

ROOM: HALDANE, 3RD FLOOR

Like farmers, educators must prepare the soil, (children's knowledge) and nurture the seed (children's social-emotional skills). Learn about Project KIND and how it helps children reach their "Keys to Success".



Out of the Blue: Expecting the Unexpected

Extension Disaster Education Award

Track: Environmental Health & Sustainability

Presenter(s): Kaci Scott, Xane Reiter, Julie Smith, Ronda White

STATE: TX

ROOM: THORNAPPLE, 3RD FLOOR

Out of the Blue: Expect the Unexpected, a four-session program presented in Borden, Garza, Lynn, and Scurry Counties addressed preparing for natural disasters, handling emergencies, legalities, recordkeeping, and end-of-life planning.

Public Health and Indigenous Communities

Track: Education, Leadership, and Diversity

Presenter(s): Joseph Sowmick, Sue Sowmick

STATE:

ROOM: EMERALD A, 2ND FLOOR

This session will discuss trust/distrust with Western medicine by indigenous communities and share examples from the field about bringing the Covid vaccine to tribal communities, including use of dialogues and marketing.

Strengthening Identity, Well-being, and Family Connection through Family History

Track: Health and Well-being

Presenter(s): Stacey MacArthur, Cindy Nelson, Andrea Schmutz

STATE: UT

ROOM: EMERALD B, 2ND FLOOR

Learn to engage in and teach Family History. Explore a free family history database, interactive activities, and family connection to strengthen identity and well-being. Access free curriculum to get started.

Using Story as a Superpower to Promote Mental Health and Social Connection

Track: Health and Well-being

Presenter(s): Linda Burgard, Amy Kostelic

STATE: KY

ROOM: IMPERIAL BALLROOM, 1ST FLOOR

Learn how Your Story; Your Superpower addresses personal and community well-being and the loneliness epidemic. The multi-session workshop helps individuals collect, create, and curate personal stories in a supportive environment.

9:45 AM - 10:00 AM

Hospitality Desk Open

**AMWAY GRAND REGISTRATION AREA
(CENTER CONCOURSE 2ND FLOOR)**

CONCURRENT SESSIONS

10:00 AM - 10:45 AM

A Path Forward for Diabetes Prevention and Management: Leveraging Multi-State Extension Programs for Greater Impact

Track: Health and Well-being

Presenter(s): Gwen Crum, Allison Berg, Lisa Graves, Michelle Parisi, Dan Remley

STATE: MULTI-STATE

ROOM: HALDANE, 3RD FLOOR

This presentation highlights three evidence-based and multi-state Extension programs that address diabetes prevention and management. It compares program outcomes, delivery, and implementation strategies to inform decisions regarding adoption and implementation.



Buckeye Bookworms Book Club Innovation in Programming Award

Track: Education, Leadership, & Diversity

Presenter(s): Lisa Barlage, Jessica Lowe, Ryan Kline, Misty Harmon, Alisha Barton, Alexis Masterson, Aaron Fowler, Laura Halladay, Taylor Potts

STATE: OH

ROOM: IMPERIAL BALLROOM, 1ST FLOOR

Explore how the Buckeye Bookworms book club created community, reduced stress, increased empathy, and improved the mental health of participants by combining Extension education and traditional book club discussion.

Creating a Healthier and Safer Home Environment by Reducing Sentimental Clutter

Track: Environmental Health and Sustainability

Presenter(s): Susan Moore, Pamela Turner, Diane Bales, Laura Smith, Jasmine Harris-Speight, Mary Dozier, Jennifer Krafft, Mary Welch, David Buys

STATE: MULTI-STATE

ROOM: GRAND VIEW A, 3RD FLOOR

Rightsizing is a multi-state project focused on helping people deal with sentimental clutter to create healthier, safer home environments, reduce falls, and improve overall quality of life while reducing consumption.



Illinois Dial-Gauge Pressure Canner Testing Expansion

NEAFCS Endowment Grant Recipient

Track: Food and Nutrition

Presenter(s): Caitlin Mellendorf

STATE: IL

ROOM: GRAND VIEW BC, 3RD FLOOR

Leveraging Extension staff increased access to dial-gauge canner testing program for home canners.

Leveraging Partnerships Among Extension Programs to Build Food Safety Educational Capacity and Expand Industry Accessibility to Resources

Track: Food and Nutrition

Presenter(s): Kate Nicholas, Ellen Shumaker, Ben Chapman, Clint Stevenson, Stephanie Cotter, Salam Ibrahim, Tahl Zimmerman, Lynette Johnston

STATE: NC

ROOM: VANDENBERG B, 2ND FLOOR

This project seeks to increase food safety educational capacity of extension personnel

through training and resource development, advancing agents' knowledge through webinars, in-person training, and a digital resource repository.

Live Well, Age Well - Starting Now!

Track: Lifespan Development and Family Relationships

Presenter(s): Dennis DeCamp, Treva Williams, Abbie Mowen

STATE: OH

ROOM: EMERALD A, 2ND FLOOR

Explore an initiative to help older adults improve their quality of life by learning strategies to address health concerns, increase technology use, and implement proactive estate and financial planning practices.

Maintaining New Tai Chi Skills Through Booster Sessions: A Transferable Model.

Track: Skill-based

Presenter(s): Laura Anderson, Anita Carter, Dawn Contreras, Christi Demitz, Holly Tiret

STATE: MI

ROOM: THORNAPPLE, 3RD FLOOR

Extension programs provide knowledge but often lack follow-up. A long-term transferable teaching model can enhance most programs, enabling participants to practice and sustain new behaviors.

New Messaging for Farmers' Mental Health

Track: Health and Well-being

Presenter(s): Alexander Chan

STATE: MD

ROOM: VANDENBERG A, 2ND FLOOR

In order to increase the uptake of mental health services by agricultural populations, trusted, within-group sources of information must be front and center in public health messaging.

Reframing the Status Quo of Community-Based Programming for the Aging Demographic: Lessons from a Needs Assessment

Track: Health and Well-being

Presenter(s): Lauren Roberson, Sarah Anderson, Enid Borden, Kimberly Parker, Sudha Sankar, Susan Zies, Misty Harmon, Abby Pound, Alex Ho

STATE: MULTI-STATE

ROOM: EMERALD B, 2ND FLOOR

The United States is aging. Disease prevalence increases with age. Community-based solutions to manage disease are efficacious. Needs assessment findings of older adults are emphasized with practical implications for programming.

When Translating is Not Enough: Understanding Latino Food Preferences for Creating Effective Nutrition Education Resources

Track: Food and Nutrition

Presenter(s): Celina Wille

STATE: UT

ROOM: PEARL, 2ND FLOOR

Findings from a food preference evaluation reveal the limitations of direct translations and emphasize incorporating culturally sensitive and familiar ingredients to enhance engagement of Spanish-speaking Latinos in nutrition education

10:45 AM - 11:00 AM

Hospitality Desk Open

**AMWAY GRAND REGISTRATION AREA
(CENTER CONCOURSE 2ND FLOOR)**

10:30 AM – 11:30 AM

Silent Auction Drop Off

**AMWAY GRAND REGISTRATION AREA
(CENTER CONCOURSE 2ND FLOOR)**



11:00 AM – 1:00 PM

Regional Business Meetings and Awards Luncheon

**CENTRAL REGION – AMBASSADOR BALLROOM WEST
EASTERN REGION – GOVERNORS ROOM
SOUTHERN REGION – AMBASSADOR BALLROOM EAST
WESTERN REGION – GERALD R. AND BETTY FORD PRESIDENTIAL BALLROOM**



1:30 PM – 5:30 PM

In-Depth Sessions

(see in-depth session grid on the next page for additional information)



1:30 PM – 5:30 PM

Exhibitor Set-up

DEVOS PLACE CONVENTION CENTER - SECCHIA LOBBY

1:45 PM – 5:30 PM

Program Leaders Meeting - Day 1

(Separate Registration Required)

ROOM: GERALD R. AND BETTY FORD PRESIDENTIAL BALLROOM, 1ST FLOOR

5:30 PM – 7:00 PM

State Photos

Meet on the first floor/street level of the DeVos Place Convention Center.

6:00 PM or after

State's Night Out

1:30 PM – 5:30 PM | IN-DEPTH SESSIONS



See ticket for bus loading location and departure time.

IN-DEPTH SESSION TITLE	PROGRAM AREA	LOCATION	BUS #/ ROOM #	PICK-UP LOCATION
Holland History and Coastal Experience	Community and Economic Development	Offsite	1	Lyon Street, Amway Grand
Vine to Wine: A Journey Through Excellence	Food & Beverage, Packaging and Distribution, Marketing, Management	Offsite	2	Lyon Street, Amway Grand
An Apple A Day, Grown in West Michigan	Food and Nutrition, Food Safety, Community and Economic Development	Offsite	3	Monroe Ave., DeVos Place
Brews and Market Extravaganza	Community and Economic Development, Food and Nutrition, Food Safety	Offsite	4	Monroe Ave., DeVos Place
Housing for All: Tour of Home Repair Services	Financial education, food and nutrition	Offsite	6	Monroe Ave., DeVos Place
Service Project: Kids Food Basket	Addressing food insecurity	Offsite	9	Monroe Ave., DeVos Place
Unleashing the Power of AI - a practical introduction for Extension staff	Information technology	Onsite	Thornapple, 3rd Floor	Amway Grand

TUESDAY

WEDNESDAY, OCTOBER 22, 2025

WEDNESDAY SCHEDULE AT A GLANCE

6:15 AM – 7:15 AM	Wellness Activity – Tai Chi
7:00 AM – 10:00 AM	Silent Auction Drop-Off
7:00 AM – 11:00 AM	Exhibitor Set-Up/Silent Auction Set-Up
7:00 AM – 5:00 PM	Registration Desk Open
7:00 AM – 5:00 PM	Rest & Relaxation Room Open
8:45 AM – 11:30 AM	Hospitality Desk Open (<i>Hospitality Desk will be open between concurrent sessions</i>)
8:00 AM – 11:30 AM	Concurrent Sessions
8:00 AM – 2:00 PM	Marketplace
8:00 AM – 4:15 PM	National Program Leaders Meeting – Day 2 (<i>Separate registration required</i>)
11:00 AM – 11:30 AM	Exhibit Hall Orientation (<i>Exhibitors Only</i>)
11:30 PM – 1:00 PM	Hospitality Desk Open
11:30 PM – 5:30 PM	Exhibit Hall Open (<i>Boxed Lunch provided</i>) <ul style="list-style-type: none">• Silent Auction (<i>Last bid 5:30 PM</i>)
12:45 PM – 5:00 PM	Exhibit Forums
11:45 AM – 1:00 PM	National Program Leaders & Board Lunch
1:15 PM – 2:45 PM	Leadership Event (<i>invitation only</i>)
3:00 PM	Delegate Check-in for Annual Business Meeting
3:15 PM – 4:15 PM	Showcase of Excellence Posters Staffed Time (<i>optional</i>)
3:15 PM – 5:15 PM	Annual Business Meeting
5:30 PM	Exhibitor and Showcase of Excellence Tear Down
5:45 PM – 6:45 PM	State Photos
5:45 PM or after	States Night Out (<i>optional second evening if needed</i>)



6:15 AM – 7:15 AM

Wellness Activity – Tai Chi

ROOM: WINCHESTER, 3RD FLOOR

7:00 AM – 10:00 AM

Silent Auction Drop Off

**AMWAY GRAND REGISTRATION AREA
(CENTER CONCOURSE 2ND FLOOR)**

7:00 AM – 11:00 AM

**Exhibitor Set-up/Silent Auction
Set-up**

**DEVOS PLACE CONVENTION
CENTER - SECCHIA LOBBY**

7:00 AM – 5:00 PM

Registration Desk Open

*AMWAY GRAND REGISTRATION
DESK (CENTER CONCOURSE 2ND
FLOOR)*

7:00 AM – 5:00 PM

Rest & Relaxation Room Open

ROOM: RUBY, 2ND FLOOR

8:00 AM – 2:00 PM

Marketplace

*AMWAY GRAND - CENTER
CONCOURSE*

8:45 AM – 11:30 AM

**Hospitality Desk Open -
between concurrent sessions**

*AMWAY GRAND REGISTRATION
AREA
(CENTER CONCOURSE 2ND
FLOOR)*

8:00 AM – 4:15 PM

**National Program Leaders
Meeting Day 2**

*(Separate registration required)
ROOM: GERALD R. AND BETTY
FORD PRESIDENTIAL BALLROOM,
1ST FLOOR*

CONCURRENT SESSIONS

8:00 AM – 8:45 AM

**Addressing Stigma and other
Barriers to Mental Health Care in
Rural and Farming Communities
Through a Statewide Collaborative**

Track: Health and Well-being

*Presenter(s): Ami Cook, David Roberts, Andrea
Hoover, Lauren Prinzo*

STATE: WV

ROOM: VANDENBERG A, 2ND FLOOR

The State Network for Rural Mental Health and Farm Stress addresses stigma and other barriers to mental health care in rural and farming communities through a statewide collaborative of professionals.

**Changing our Mental and Emotional
Trajectory (COMET)**

Track: Health and Well-being

Presenter(s): Sara Croymans, Samantha Roth

STATE: MN

**ROOM: IMPERIAL BALLROOM, 1ST
FLOOR**

This session explores COMET™, a two-hour interactive training that equips participants to support others struggling with mental health. Attendees will learn its collaborative approach, seven-item guide, and evaluation outcomes.

Eating Healthy on \$2/Meal/Person (Part 1): Case Studies and the Thrifty Food Plan

Track: Financial Health and Capability

Presenter(s): Carol Smathers, Candace Heer, Laura Halladay, Margaret Jenkins

STATE: OH

ROOM: GOVERNORS ROOM, 2ND FLOOR

***Part 2 will be held at the 10:00 hour in the same room**

Are healthy foods too expensive? Explore food insecurity definitions and trends, cost of food reports, food assistance allotments, and a presenter's experiences eating healthy on \$6 per day since 2018.

Effective Strategies for Facilitator Fidelity in an Evidence-Based Initiative

Track: Health and Well-being

Presenter(s): Jaci Foged, Lynn DeVries, Emily Manning, Ingrid Lindal, Erin Kampbell, Holly Hatton

STATE: NE

ROOM: PEARL, 2ND FLOOR

The CHIME Guiding Teacher Facilitator Program supports caregiver well-being by expanding the reach of the 8-week program, ensuring fidelity to its original design amid growing regional and national demand.

Empowering the next generation: Community-based programs to teach young children about climate change

Track: Environmental Health and Sustainability

Presenter(s): Katherine Speirs, Daniel McDonald, Courtney Luecking

STATE: MULTI-STATE

ROOM: HERITAGE HILL, 3RD FLOOR

This session will provide an overview of community-based programs Cooperative

Extension educators can use to teach young children about climate change and empower them to take action.

Guidance for the Foodhandler on the management of HALAL Food

Track: Economic and Workforce Development

Presenter(s): Mary Donaldson

STATE: MI

ROOM: GRAND VIEW BC, 3RD FLOOR

Educate food service workers by providing introductory knowledge to prepare and serve Halal meals that are inclusive and supportive of cultural pluralism.

Manage Your Spark to Ignite Your Passion and Power Your Potential

Track: Education, Leadership, and Diversity

Presenter(s): Patrice Powers-Barker, Melissa J. Rupp, Shannon Carter

STATE: OH

ROOM: VANDENBERG B, 2ND FLOOR

Dedicated Extension professionals often face intense work pressure. This purpose-driven approach to management prompts FCS Extension Professionals to reignite their spark and reengage in their personal work mission and purpose.



Strong Dads

Mary W. Wells Memorial Diversity Award-National Winner

Track: Education, Leadership, & Diversity

Presenter(s): Matthew Brosi, Ronald Cox, Katey Masri, Robert Bodick, Cassandra Cotton

STATE: OK

ROOM: HALDANE, 3RD FLOOR

Strong Dads has engaged over 900 diverse fathers across Oklahoma, including incarcerated individuals, through bilingual education, coaching, and case management, fostering confidence, co-parenting communication, and community among historically underserved fathers.

Nurturing New Beginnings: The Impact of Extension Prenatal Education on Expectant Parents in Utah

Track: Lifespan Development and Family Relationships

Presenter(s): Jenna Dyckman, Kate Chappell, Aaron Hunt

STATE: UT

ROOM: EMERALD B, 2ND FLOOR

Discover how evidence-based prenatal education can reduce risks like maternal and infant mortality, gestational diabetes, and mental health issues. Learn about Utah's innovative 4-week program designed for expecting parents.

Reframing Aging in Cooperative Extension: Tools and Resources for Extension Professionals

Track: Skill-based

Presenter(s): Leacey Brown, Sara Richie, Erin Martinez

STATE: MULTI-STATE

ROOM: GRAND VIEW A, 3RD FLOOR

Cooperative Extension is at the forefront of education and outreach to improve health and wellness across the lifespan. This session will examine ageism, teach communication strategies, and provide teaching tools.

The Impact of FCS: Overview of AAFCS FCS Industry Research Study

Track: Trending Topics

Presenter(s): Karin Athanas

STATE: VA

ROOM: EMERALD A, 2ND FLOOR

In 2024-2025, the AAFCS conducted a study to identify the reach and economic impact of FCS professionals. This presentation will review the key findings of that study.



The Leadership Experience: Bridging Leadership Gaps

Track: Committee

Presenter(s): Carrie Elsen, Elizabeth Martin, Troy Anthony Anderson, Christi Demitz, Kristin Miller, Dhruvi Patel, Jacqueline Doucet, Darlene Minniefield

STATE: MULTI-STATE

ROOM: THORNAPPLE, 3RD FLOOR

The Leadership Experience empowers emerging leaders through a dynamic, evidence-based program that builds confidence, sharpens strategic skills, and fosters mentorship—preparing Extension professionals to lead with impact and resilience.

8:45 AM - 9:00 AM

Hospitality Desk Open

**AMWAY GRAND REGISTRATION AREA
(CENTER CONCOURSE 2ND FLOOR)**

CONCURRENT SESSIONS

9:00 AM - 9:45 AM



Awards: Updates You Need to Know

Track: Committee

Presenter(s): Diane Reinhold, Jamie Mahlandt, Natalie Snowden

STATE: MULTI-STATE

ROOM: GRAND VIEW A, 3RD FLOOR

Discover the latest updates to the 2026 Awards Manual and gain practical tips and strategies for crafting a standout application that showcases the impact of your outstanding work.

Do you need an MOU?

Track: Skill-based

Presenter(s): Gina Peek, Brenda Miller, Susan Routh

STATE: OK

ROOM: HERITAGE HILL, 3RD FLOOR

Memorandums of Understanding (MOUs) clarify roles, expectations, and responsibilities in Extension programming. This session explores when an MOU is needed, using the Poverty Simulation as a case study.



Elevate Couples Georgia: Promoting Healthy

Relationships Through Social Media Social Media Education Award

Track: Technology

Presenter(s): Ted Futris, Brigitte Love, Isabel Schroeder, Brittney Thompson, La Keshia Levi, Brittany Harrison, Amanda Harner, Brad Averill, Suzanne Williams, Zoe Soltanmammedova, Evin Richardson

STATE: GA

ROOM: GOVERNORS ROOM, 2ND FLOOR

The Elevate Couples Georgia team effectively used social media to provide couples across the state with educational tips on how to take their relationship to the next level.

Empowering Communities Through Photovoice: Capturing Local Food Environment Concerns and Inspiring Change

Track: Food and Nutrition

Presenter(s): Veronica Jones

STATE: NJ

ROOM: EMERALD B, 2ND FLOOR

Photovoice empowers community members to use storytelling to highlight local issues and inspire action. Learn how photovoice is an

effective tool in exploring and addressing local food environment concerns.

Fashion Entrepreneurship: Implications for Workforce Development in Extension Family Consumer Sciences

Track: Economic and Workforce Development

Presenter(s): David Roberts, Ami Cook, Andrea Hoover, Dana Wright, Cheryl Kaczor

STATE: WV

ROOM: EMERALD A, 2ND FLOOR

The Fashion Impact Challenge (FIC) is a replicable program model that engages rural underserved youth and traditional college students to build knowledge, confidence, and interest in pursuing fashion entrepreneurship careers.

Future Ready: Career Exploration Powered by Virtual Reality

Track: Technology

Presenter(s): Christopher Sneed, Shelly Barnes, Clint Cummings, Sreedhar Upendram, Karen Franck, Janet Fox

STATE: TN

ROOM: VANDENBERG A, 2ND FLOOR

This session showcases a VR pilot program helping adults of limited resources explore careers. This session covers design, implementation, evaluation, procurement, partnerships, and resources for implementing VR-powered career education initiatives.

Harvest Extend: Reducing Food Waste and Increasing Access to Nutritious Foods by Processing Excess or Unacceptable Produce into Shelf- Stable Products for Donation to Food Pantries

Track: Food and Nutrition

Presenter(s): Carrie Durward

STATE: UT

ROOM: VANDENBERG B, 2ND FLOOR

Discover how the Harvest Extend Program can reduce food waste, improve nutrition, and alleviate hunger in your community. Learn about our toolkit and gain practical support to implement similar programming.



Mindful Management Solutions

Access, Engagement, and Outreach

Award

Track: Education, Leadership, and Diversity

Presenter(s): Troy Anderson, Deon Littles

STATE: MD

ROOM: HALDANE, 3RD FLOOR

The Mindful Management Solutions program empowers leaders with mindfulness techniques to improve decision-making and team dynamics. It effectively reduces stress and enhances emotional intelligence, fostering healthier work environments.

One Village, United Vision, Defeating Diabetes Though Awareness and Education

Track: Health and Well-being

Presenter(s): Elizabeth Schweigert, James Keys

STATE: OH

ROOM: IMPERIAL BALLROOM, 1ST FLOOR

One way to celebrate Diabetes Awareness month (November) is to host community awareness day events. Discover ways to bring awareness about diabetes all month long.

Resilient Co-Parenting: A Statewide Approach for a Monthly Virtual Class Series that Recognizes the Evolving Nature of Co-Parenting Relationships

Track: Lifespan Development and Family Relationships

Presenter(s): Hannah Zellmer, Heidi Ungrodt, Tracy Henegar, Patricia Carroll, Missy Bablick

STATE: WI

ROOM: PEARL, 2ND FLOOR

Responding to emerging needs to support co-parenting families beyond the transition of divorce, this team developed monthly virtual co-parenting classes. Learn about the development, implementation, and evaluation of this effort.



Stepping Stones to Stability

Financial Management Award in

Memory of Dean Don Felker

Track: Financial Health & Capability

Presenter(s): Karen (Kay) Denniston

STATE: KY

ROOM: THORNAPPLE, 3RD FLOOR

This program empowers families to break dependency on holiday assistance by understanding financial decisions, recognizing spending patterns, and taking ownership of their finances for long-term stability and self-sufficiency.

The Power of Family Meals: A Collaborative Effort for Healthier Families

Track: Lifespan Development and Family Relationships

Presenter(s): Kelsie Muller, Joyce Miles, Lisa Graves

STATE: IN

ROOM: GRAND VIEW BC, 3RD FLOOR

Sharing a family meal has been found to be good for the overall health of all family members. Extension joined efforts to promote family meals across the state.

9:45 AM - 10:00 AM

Hospitality Desk Open

**AMWAY GRAND REGISTRATION AREA
(CENTER CONCOURSE 2ND FLOOR)**

CONCURRENT SESSIONS

10:00 AM - 10:45 AM

Age-Friendly Ocean County: The Development of a Multisector Plan on Aging*Track: Lifespan Development and Family Relationships**Presenter(s): Kathleen Cullinen***STATE: NJ****ROOM: PEARL, 2ND FLOOR**

A countywide project fostering cross-sector partnerships to engage older adults, adults with disabilities, and caregivers in a culturally responsive needs assessment to identify strategies to support aging-in-place will be presented.

**Blueprint for Publication: Navigating Manuscript****Submission to the Journal of NEAFCS***Track: Committee**Presenter(s): Rebecca C. Ackah, Ashley Dixon-Kleiber, Meagan Salomon, Emily Harmon, Brittany Martin***STATE: MULTI-STATE****ROOM: GRAND VIEW BC, 3RD FLOOR**

Design your blueprint for success from concept to publication! Join our workshop to uncover the essential steps for submitting manuscripts to the Journal of the National Extension Association of Family and Consumer Sciences.

Bridging the Digital Divide in Socio-Economically Disadvantaged Communities in the South*Track: Technology**Presenter(s): Roseanne Scammahorn, Kimberly Davis, John Green, Krystle Allen, Dorothy*

Brandon, Rina Castillo, Biswanath Dari, Roberto Gallardo, Catressa Gooden, Jimmy Henry, Marianna Langston, Conchita Newman, Sarah Sims, Yolanda Surrency, Terrance Wolfork

STATE: MULTI-STATE**ROOM: VANDENBERG A, 2ND FLOOR**

Six 1890 Digital Skill Coaches will share their story of how they narrowed the digital divide by addressing issues related to the adoption and advancement in Socio-Economically Distressed (SED) communities.

Connecting, Innovating, and Growing Stronger Communities of Support for Alzheimer's and Dementia Caregivers*Track: Health and Well-being**Presenter(s): Janet Fox, Ann Berry, Joel Clark, Karen Franck, Matt Devereaux, Kristen Johnson, Jessica Taylor***STATE: TN****ROOM: IMPERIAL BALLROOM, 1ST FLOOR**

The "Pat's Gameplan for Caregivers" workshop equips caregivers with tools, emotional support, and resources through interactive activities, helping them navigate challenges and improve caregiver and patient outcomes in Alzheimer's care.

Connecting the Dots from 1862 to 2025*Track: Education, Leadership, and Diversity**Presenter(s): Chris Kniep, Donna Donald***STATE: MULTI-STATE****ROOM: HERITAGE HILL, 3RD FLOOR**

Abraham Lincoln, Morrill Act, and Land Grant Institutions represent our country's commitment to higher education. Learn how Extension Educators from 112 institutions fulfill the original vision to educate the masses.

Cottage Food Law & You

Track: Food and Nutrition

Presenter(s): Kellie Jordan, Karen Fjfield

STATE: MI

ROOM: VANDENBERG B, 2ND FLOOR

Educate and empower home-based food entrepreneurs by providing comprehensive training on Cottage Food Law. Using interactive online format, teaching legal requirements and food safety standards. Through collaborations and marketing techniques.

Eating Healthy on \$2/Meal/Person (Part 2): Rethinking Food Affordability for our FCS Work

Track: Financial Health and Capability

*Presenter(s): Candace Heer, Carol Smathers,
Laura Halladay, Margaret Jenkins*

STATE: OH

ROOM: GOVERNORS ROOM, 2ND FLOOR

Following Part 1 about food insecurity, USDA food plans and cost reports, and eating healthy on \$6/day/person, a panel of FCS educators applies these concepts to our work (Part 2).

Empowering FCS Extension through the Military Family Readiness Academy

Track: Skill-based

*Presenter(s): Molly Herndon, Kristen Jowers,
Kalin Goble Mathis, Nichole Huff*

STATE: MULTI-STATE

ROOM: THORNAPPLE, 3RD FLOOR

This session introduces OneOp's Military Family Readiness Academy, designed to enhance the knowledge and skills of FCS Extension professionals to support the well-being of military service members and their families.

Empowering Parents: Developing an Online Vaping Education Program to Support Parental Involvement

Track: Lifespan Development and Family Relationships

*Presenter(s): Adrienne Duke, Nana Adjoa
Konadu Attiah, Angela Mintah*

STATE: AL

ROOM: GRAND VIEW A, 3RD FLOOR

Our session discusses the design process of an online vaping education program for parents. We will share the research-informed practices and practical design elements used to create the program.

Empowering Rural Communities: A Research-Based Vaccine Toolkit to Combat Hesitancy

Track: Health and Well-being

*Presenter(s): Myriam Shaw Ojeda, Daniel
Remley*

STATE: OH

ROOM: HALDANE, 3RD FLOOR

Rural communities face widespread vaccine hesitancy. This session introduces a research-driven vaccine toolkit, to equip Extension professionals and the public with powerful, evidence-based strategies that boost vaccine confidence and engagement.

Freeze Drying 101: Preparing Extension Professionals to Educate Clientele

Track: Food and Nutrition

Presenter(s): Margine Bawden, Amy Robertson, Cindy Pearson

STATE: MULTI-STATE

ROOM: EMERALD A, 2ND FLOOR

Explore the increasing popularity of home freeze drying. This session will equip educators to guide clientele through the freeze drying process, enhancing food preservation skills for optimal results.

Nourish your body: Assessing the results of an Extension outreach program delivered face-to-face or online

Track: Health and Well-being

Presenter(s): Julie Garden-Robinson, Sherri Stastny, Nathaniel Johnson

STATE: ND

ROOM: EMERALD B, 2ND FLOOR

A series of online and face-to-face "Nourish" Extension programs have been developed to meet the needs of adults in rural communities. Participants have reported positive behavior changes in nutritional intake.

11:00 AM - 11:30 AM

Exhibitor Orientation

This is open to exhibitors only.

DEVOS PLACE CONVENTION CENTER – SECCHIA LOBBY

10:45 AM - 11:00 AM

Hospitality Desk Open

**AMWAY GRAND REGISTRATION AREA
(CENTER CONCOURSE 2ND FLOOR)**

CONCURRENT SESSIONS

11:00 AM - 11:30 AM

4-H Family Dinner: Bringing Families to the Table

Track: 4-H and Youth Development

Presenter(s): Rebecca Thomas, Abbie Salmon

STATE: GA

ROOM: VANDENBERG A, 2ND FLOOR

Encouraging family mealtime, 4-H Family Dinner was implemented, sharing monthly recipes and engaging families in cooking/dining together. This engaged 79 individuals across the U.S., fostering family bonding and life skills.

Adapting our Web Presence to Generative Artificial Intelligence Queries

Track: Technology

Presenter(s): Silvia Vilches, YaeBin Kim, Kelsie Muller, Brittany Schrick, Amanda Griswold

STATE: MULTI-STATE

ROOM: VANDENBERG B, 2ND FLOOR

Testing of Generative Artificial Intelligence (AI) responses to five common parenting questions shows that we need to adapt our Extension web presence in several key ways.

Building Client-Centered Pantries: A Training Model for Adopting SWAP and Promoting Dignity in Food Access

Track: Food and Nutrition

Presenter(s): Keltra E. Chandler, Sophie Hathway, Latara Arterberry

STATE: MS

ROOM: EMERALD A, 2ND FLOOR

This presentation will cover training ten food pantries to implement SWAP and client choice models, promoting healthier options, fostering dignity, enhancing client autonomy, and improving health outcomes.

College Students, Student Loans, and Budgeting

Track: Financial Health and Capability

Presenter(s): Jesse Ketterman

STATE: MD

ROOM: IMPERIAL BALLROOM, 1ST FLOOR

Many students attend college without thinking about the cost, how much money they are borrowing, and how to manage money as a student. Let's show them how.

Connecting Sustainable Living "Zero-Waste" Practices to Improved Financial Well-Being

Track: Environmental Health and Sustainability

Presenter(s): Sherry Bell

STATE: MS

ROOM: EMERALD B, 2ND FLOOR

The Sustainable Home program was developed to make the connection that implementing environmentally sustainable "zero-waste" practices in the home, not only benefits the environment, but can improve long-term financial well-being.

From Gleaning to Preserving: WSU Food Systems & Food Recovery Collaboration

Track: Food and Nutrition

Presenter(s): Jennifer Bryan-Goforth

STATE: WA

ROOM: GOVERNORS ROOM, 2ND FLOOR

Partnership between a food recovery organization and Extension provided food preservation education and a tool lending library, empowering participants to safely store surplus food, reduce waste, and enhance food security.

Libraries of Things Help Communities Preserve the Harvest

Track: Food and Nutrition

Presenter(s): Jared Hibbard-Swanson,

Stephanie Chase, Lauren Kraemer

STATE: OR

ROOM: THORNAPPLE, 3RD FLOOR

Library of Things partnerships between public libraries and Extension can support safe use of food preservation equipment and help residents build food security and resilience.

SNAP Retailer Application Process Deconstructed for Quick and Easy Success Assisting Non-Profits, Farmers, and Markets

Track: Trending Topics

Presenter(s): Weatherly Thomas

STATE: SC

ROOM: GRAND VIEW A, 3RD FLOOR

Take a detailed look at the USDA SNAP Retailer Application, receive relevant experiences and tips to help you achieve success when working with non-store applicants to accept SNAP EBT.

The Recipe for Success: Resources for Aspiring Food Entrepreneurs

Track: Food and Nutrition

Presenter(s): Emily Marrison, Julie Garden-

Robinson, Karen Fifield, Cindy Brison, Karen

Blakeslee

STATE: MULTI-STATE

ROOM: HALDANE, 3RD FLOOR

Explore resources available to support food entrepreneurs in your communities, and learn about a structured approach for multi-state collaboration with considerations for planning, promoting, conducting, and evaluating a webinar series.

What Is Old Can Be New Again: Using Generative Artificial Intelligence to Modernize Curricula and Educational Materials

Track: Trending Topics

Presenter(s): Lisa Hamilton, Natasha Parks, Giovanna Benitez, Jenny Rodriguez, Cyndi Longley

STATE: FL

ROOM: PEARL, 2ND FLOOR

This session will demonstrate how to use generative artificial intelligence tools to update curricula, create images and evaluations, and explore adaptive activities to engage learners.

11:30 AM – 1:00 PM

Hospitality Desk Open

AMWAY GRAND REGISTRATION AREA

11:30 AM – 5:30 PM

Exhibit Hall Open/Silent

Auction Open

DEVOS PLACE CONVENTION

CENTER - SECCHIA LOBBY

Showcase of Excellence Posters Staffed

3:15 PM – 4:15 PM

(See page 63 for more information on Showcase of Excellence Poster Displays)



11:30 AM – 1:00 PM

Lunch in Exhibit Hall

11:30 AM – 5:30 PM

Silent Auction in Hall

Last bid 5:30 PM

50/50 Raffle Winner Announced at 5:30 PM in the Exhibit Hall

11:45 AM – 1:00 PM

National Board and Program Leaders Lunch

ROOM: GERALD R. AND BETTY FORD PRESIDENTIAL BALLROOM, 1ST FLOOR

12:45 PM – 5:00 PM

Exhibit Forums

ROOM: GRAND GALLERY F

(DEVOS PLACE CONVENTION CENTER)

See details on page 54.



1:15 PM – 2:45 PM

Leadership Event

ROOM: IMPERIAL BALLROOM, 1ST FLOOR

(invitation only)

2:45 PM - 3:15 PM

Delegate Check-In for Annual Business Meeting

ROOM: DEVOS PLACE CONVENTION CENTER BALLROOM D

3:15 PM – 4:15 PM

Showcase of Excellence Poster Staffed Time

(optional)

AMWAY GRAND HOTEL – CENTER CONCOURSE

3:15 PM - 5:15 PM

Annual Business Meeting

ROOM: DEVOS PLACE CONVENTION CENTER BALLROOM D

This meeting is open to all members.
Delegates are required to attend.

5:30 PM

Exhibitor and Showcase of Excellence Tear Down

5:45 PM – 6:45 PM

State Photos

**MEET ON THE FIRST FLOOR/
STREET LEVEL OF THE DEVOS PLACE
CONVENTION CENTER.**

5:45 PM or after

States Night Out

2025 EXHIBIT FORUMS - WEDNESDAY

Wednesday, September 22 | 12:45 PM - 5:00 PM



12:45 PM – 1:15 PM

News in Preserving with the Ball® Brand of Fresh Preserving Products

Company: Newell Brands

Presenter(s): Stephen Galucki

ROOM: GRAND GALLERY F, DEVOS PLACE CONVENTION CENTER

The Product Development Team from Newell Brands, the makers of Ball(r) Mason Jars, will share a deep dive on new products and the latest recipe book updates.



3:00 PM – 3:30 PM

Brace Yourself: Accident Insurance 101

Company: American Income Life Special Risk Division

Presenter(s): Erin Bain

ROOM: GRAND GALLERY F, DEVOS PLACE CONVENTION CENTER

The AIL Special Risk Division has been providing coverage for Extension programs for over 70 years. Learn about how this simple and cost-effective option can protect your participants!

WEDNESDAY

1:30 PM – 2:00 PM

From Outreach to Outcomes: How PEARS Tracks and Elevates FCS Program Success

Company: Canopy, a Public Benefit Company

Presenter: Allison Teeter, Ph.D.

ROOM: GRAND GALLERY F, DEVOS PLACE CONVENTION CENTER

Discover how PEARS helps FCS professionals track outreach, measure impact, and simplify reporting – capturing the full story of their programs and turning data into actionable insights that drive success.

2:15 PM – 2:45 PM

Using the Money Habitudes® Workbook to Engage your Participants

Company: Money Habitudes, LLC

Presenter(s): Cara Macksoud

ROOM: GRAND GALLERY F, DEVOS PLACE CONVENTION CENTER

Learn how to use the Money Habitudes(r) Workbook to spark meaningful conversations, increase engagement, and help participants reflect on their financial habits and motivations.

3:45 PM – 4:15 PM

Meet the New RealCare Baby® 4: More Realism, More Impact, More Opportunities for Hands-on Learning!

Company: Realityworks Inc.

Presenter(s): Denise DuBois

ROOM: GRAND GALLERY F, DEVOS PLACE CONVENTION CENTER

The wait is over - RealCare Baby 4 is here! Join us to explore the exciting new features of the world's most advanced infant simulator.

4:30 pm – 5:00 pm

Journey to Industry Success

Company: National Restaurant Association

Presenter(s): Eric Weiss

ROOM: GRAND GALLERY F, DEVOS PLACE CONVENTION CENTER

An overview of what is new regarding certifications and textbooks from the National Restaurant Association (NRA) and the America Hotel and Lodging Educational Institute (AHLEI) to prepare for success in the Culinary and Hospitality industries.

THURSDAY, OCTOBER 23, 2025

THURSDAY SCHEDULE AT A GLANCE

6:15 AM – 7:15 AM	Wellness Activity - Zumba
7:00 AM – 12:00 PM	Registration Desk Open
8:00 AM	Showcase of Excellence Poster Display Tear Down <i>(must be down by 8:00 am)</i>
8:00 AM – 9:30 AM	Closing Session & Breakfast
9:30 AM – 10:30 AM	Silent Auction Winners Announced
9:45 AM – 12:00 PM	Silent Auction Pick-up
10:00 AM – 11:30 AM	National Post-Board Meeting
10:00 AM – 11:45 AM	Concurrent Sessions
10:00 AM – 12:00 PM	Hospitality Desk Open
11:45 AM	Lunch on own
12:00 PM – 2:00 PM	Past President's Luncheon
2:00 PM – 3:00 PM	President's Reception
3:00 PM – 5:00 PM	National Awards Ceremony



6:15 AM – 7:15 AM

Wellness Activity - Zumba

ROOM: WINCHESTER, 3RD FLOOR

7:00 AM – 12:00 PM

Registration Desk Open

**AMWAY GRAND REGISTRATION DESK
(CENTER CONCOURSE 2ND FLOOR)**

8:00 AM

**Showcase of Excellence Poster
Display Tear Down**

(must be down by 8:00 am)



8:00 AM – 9:30 AM

Closing Session & Breakfast

**ROOM: BALLROOM AB DEVOS PLACE
CONVENTION CENTER**



See details and agenda on the next page.

10:00 AM – 12:00 PM

Hospitality Desk Open

**AMWAY GRAND REGISTRATION AREA
(CENTER CONCOURSE 2ND FLOOR)**

9:30 AM – 10:30 AM

**Silent Auction – Winners
Announced**

9:45 AM – 12:00 PM

Silent Auction Pick-Up

AMWAY GRAND REGISTRATION AREA

10:00 PM – 11:30 AM

National Post-Board Meeting

ROOM: KENDALL ROOM, 3RD FLOOR

THURSDAY

CLOSING SESSION & BREAKFAST

Thursday, October 23 | 8:00 AM – 9:30 AM

DEVOS PLACE CONVENTION CENTER – BALLROOM AB

Welcome

Jennifer Bridge, NEAFCS President

State of NEAFCS Presentation

Jennifer Bridge

Showcase of Excellence Poster Awards

Kenneth Stewart, Ambassador Committee Chair

Friend of NEAFCS Award Presentation

Jennifer Bridge

Keynote Presentation:

Fostering Connection & Wellness in the Future of Work

Mark Ostach – Speaker and Author

2026 Annual Session Invitation

Elizabeth Renfro, Lacy Yeley, Shavetta Davis

Announcements & Closing

Jennifer Bridge

Fostering Connection & Wellness in the Future of Work

Presenter: Mark Ostach

Join your fellow Extension Professionals for an inspiring capnote session that addresses one of the most pressing challenges facing Family & Consumer Sciences educators today: maintaining human connection in an increasingly digital world.

Nationally recognized digital wellness expert Mark Ostach will provide Extension educators with practical strategies for fostering connection and wellness – essential tools for both your professional practice and the communities you serve. His unique blend of expertise in business, psychology, and technology offers valuable insights for Extension professionals navigating the evolving landscape of community education and outreach.



What You'll Gain:

- Apply The BELL Method (Belonging, Empathy, Listening, & Love) to strengthen connections with both colleagues and community members
- Implement digital and emotional wellness strategies that you can share with your Extension programs and audiences
- Develop healthy workplace habits that enhance your effectiveness as an Extension educator
- Connect with fellow professionals while engaging in meaningful community-building activities

CONCURRENT SESSIONS

10:00 AM – 10:45 AM

Are Your Participants Doing Their FCS Homework?

Track: Health and Well-being

Presenter(s): Jessica Lowe, Lisa Barlage, Lorrissa Dunfee, Tammy Jones, Ryan Kline

STATE: OH

ROOM: EMERALD B, 2ND FLOOR

Learn how to turn “homework” into an evaluation tool. During this interactive presentation, see examples of participants’ homework, discuss collection tools, and hear about increased rates of adopted behaviors.

Attracting SNAP-Ed Eligible Older Adults to an Extension Health Program: Educators’ Perspectives of Promising Practices, Systemic Barriers, and Opportunities

Track: Education, Leadership, and Diversity

Presenter(s): Rachel O’Halloran,

STATE: MO

ROOM: EMERALD A, 2ND FLOOR

Learn promising practices for recruiting older adult SNAP-Ed audiences to evidence based health programs. This study collected the experiences of 14 Extension educators through asynchronous online focus groups.

Awareness of Trauma’s Impact on Financial Wellness: Understanding, Addressing, and Overcoming Barriers

Track: Financial Health and Capability

Presenter(s): Deon Littles, Troy Anderson

STATE: MD

ROOM: VANDENBERG B, 2ND FLOOR

Trauma significantly impacts financial wellness, and remains underexplored in

community programs. Adverse experiences, such as abuse, neglect, generational poverty, sudden economic hardship, shape individuals’ emotional, psychological, and financial decision-making.

Harnessing the Power of Awe: Dark Skies as Tools for Mental Health in Rural Communities

Track: Health and Well-being

Presenter(s): Troy Allan

STATE: UT

ROOM: GERALD R. AND BETTY FORD PRESIDENTIAL BALLROOM, 1ST FLOOR

Discover how awe-inspiring dark skies promote mental health and learn practical, evidence-based strategies to create transformative, awe-filled experiences for fostering resilience and connection in your community.



Kombucha Crafting at Home Food Safety Award

Track: Food & Nutrition

Presenter(s): MaryBeth Hornbeck, Cecilia Tran, Jamille Hawkins, Lazavia Grier, Carla Schwan, Olivia Tumlin, Janette Burkes, Carrie Vanderver, Jake Conner, Rebecca Ackah, Dulce Minaya, Kris Ingmundson, Susan Howington, Becky Collins, Jessie Parker, Sitara Cullinan, Mallika Mahida

STATE: GA

ROOM: THORNAPPLE, 3RD FLOOR

The “Kombucha Crafting at Home” program, developed by UGA Extension, educates participants on safe kombucha fermentation. Workshops improved knowledge, confidence, and economic impact, with resources accessible nationwide for broader adoption.



Master Clothing Volunteer Hospice Quilt Project

Master FCS Volunteer Program Award

Track: Skill-based

Presenter(s): Sarah Drysdale, Robynn Garrett, Monica Jackson, Millie Green, Linda Lawrence, Connie Talent, Natalie Mendenhall, Elaine Steven, Sandy Snarr, Lee Furst

STATE: KY

ROOM: EMERALD A, 2ND FLOOR

The Mercy-Health Lourdes Hospice Quilt Project engaged Certified Master Clothing Volunteers and community members to create 125 lap quilts for hospice patients, fostering skill development, community collaboration, and support, with future expansions planned for foster care initiatives.

Oh Deer! Addressing Food Insecurity in Rural Communities through Deer Donation

Track: Food and Nutrition

Presenter(s): Meredith Probst, Caitlin Mellendorf, Michelle Fombelle

STATE: IL

ROOM: VANDEBERG B, 2ND FLOOR

Hunters Feeding STATE connects hunters, meat processors, and food pantries to support nutrition security through venison meat and nutrition education as part of SNAP-Ed outreach.



Poverty Simulations - Forging New Partnerships in Oklahoma

Community Partnership Award

Track: Economic & Workforce Development

Presenter(s): Sonya R McDaniel, Suzette Barta, Stacy Dawson, Kathy Enyart, LaDonna Hines, Brenda Miller, Dea Rash, Susan Routh

STATE: OK

ROOM: IMPERIAL BALLROOM, 1ST FLOOR

Oklahoma's Poverty Simulation program has seen an explosion in demand with dozens of new partnerships. A new team approach has streamlined delivery of this popular program.

Safe Food = Healthy Kids

Track: Food and Nutrition

Presenter(s): Kara Lynch, Laurie Messing

STATE: MI

ROOM: GOVERNORS ROOM, 2ND FLOOR

Food Safety education for childcare providers is lacking but critical. Learn about the Safe Food = Healthy Kids curriculum to keep food safe at childcare, including best practices for implementation.

SPARKing the Future of Extension: Insights From A Longitudinal Content Analysis of FCS Extension Positions

Track: Trending Topics

Presenter(s): Erin Martinez

STATE: KS

ROOM: HERITAGE HILL, 3RD FLOOR

This study compares job postings for FCS Extension from 2019, 2023, and 2025 to identify trends and alignment with Cooperative Extension's National Framework for Health Equity and Well-Being.

CONCURRENT SESSIONS

11:00 AM – 11:45 AM

Branding Extension Programs in Urban Communities

Track: Trending Topics

Presenter(s): Jennifer Taylor, Umekia Taylor

STATE: MULTI-STATE

ROOM: GRAND VIEW A, 3RD FLOOR

Extension is often called the “best-kept secret,” a reflection of limited marketing and outreach. Researchers developed a brand kit to enhance visibility amongst urban audiences of the Northeast Region.

Bridging the Gap: An Innovative EFNEP Model for Bolstering Adult Immunization Education

Track: Health and Well-being

Presenter(s): Jackie Wilkins, Diane Oliver

STATE: OH

ROOM: HALDANE, 3RD FLOOR

This presentation explores an innovative approach to increased awareness/education for adult immunizations via EFNEP and highlights how the knowledge and reach of FCS Extension professionals and partnerships can be showcased.

Build Your Bones: A Multi-State Virtual Initiative

Track: Lifespan Development and Family Relationships

Presenter(s): Amber Otis, Wendy Dahl, Wendy Lynch, Marie Arick, Laurie Welch

STATE: MULTI-STATE

ROOM: IMPERIAL BALLROOM, 1ST FLOOR

The Build Your Bones curriculum offers participants evidence-based health practices to maintain optimal bone health throughout one's lifespan. Learn about collaborations and how to bring this program to your area.



Cardio Drumming for Youth

Innovative Youth Development

Programming Award

Track: 4-H & Youth Development

Presenter(s): Lacy Yeley

STATE: TN

ROOM: VANDENBERG A, 2ND FLOOR

Cardio Drumming for Youth is an inclusive, high-energy program that combines music, movement, and rhythm to promote physical activity, teamwork, and self-expression, making fitness fun and accessible for all ages and abilities.

Digital Volunteer Initiate

Track: Technology

Presenter(s): Rosanne Scammahorn, Amber Smyer, Kathryn Leach, Kasey Bozeman

STATE: MULTI-STATE

ROOM: EMERALD B, 2ND FLOOR

Learn how your existing Extension programming is well-positioned to provide digital skills education and support digital access capacity building in your community.

Ensuring Food Safety and Entrepreneurial Success: The University Extension Cottage Food Safety Training for Compliance, Risk Reduction, and Resilient Food Systems

Track: Food and Nutrition

Presenter(s): Mary Snow, Sheila Gains, Katie Dunker, Laura Griffin

STATE: CO

ROOM: VANDENBERG B, 2ND FLOOR

The Extension Cottage Food Safety Training ensures compliance with the State Cottage Food Act, reducing foodborne illness risks, supporting local entrepreneurs, and fostering resilient food systems through accessible, multilingual education.

Partnering with Employers to Address Family Financial Security

Track: Financial Health and Capability

Presenter(s): Suzanne Bartholomae, Jenny Abel, Barbara Wollan, Jeannette Mukayisire, Jeanne Walsh, Carol Bralich, Jonathon Ferguson, Beverly Doll

STATE: MULTI-STATE

ROOM: THORNAPPLE, 3RD FLOOR

This session reviews the implementation and outcomes of an employer-based financial wellness model implemented by two universities and offers ways that educators can implement their own programs.

“Plan, Prep, Preserve: Your Path to Saving Food and Money” Household Food Waste Reduction Toolkit: A Resource for Educators

Track: Food and Nutrition

Presenter(s): Yu Meng, Alexa Erickson, Janessa Hartmann, Marisa Neelon, Natalie Price, Deborah Schnur, Veronica Van Cleave-Hunt Irene Padasas

STATE: CA

ROOM: GOVERNORS ROOM, 2ND FLOOR

“Plan, Prep, Preserve: Your Path to Saving Food and Money” Educator Toolkit addresses community needs, reduces household food waste, and boosts confidence in effective food management.

Promoting Personal Safety Through the Empower Yourself Through Self-Defense Toolkit

Track: Health and Well-being

Presenter(s): Stephanie Carlson, Naomi Brower

STATE: UT

ROOM: GERALD R. AND BETTY FORD

PRESIDENTIAL BALLROOM, 1ST FLOOR

Discover the “Empower Yourself Through Self-Defense” toolkit, offering practical strategies for personal safety and how you can access this toolkit for personal and community use.

Sparkling Inclusivity: Enhancing Extension Services for LGBTQIA2S+ Individuals

Track: Education, Leadership, and Diversity

Presenter(s): Ricardo Kairios

STATE: NJ

ROOM: EMERALD A, 2ND FLOOR

This session addresses barriers LGBTQIA2S+ individuals face in accessing community programs, focusing on intersectionality, racial justice, and inclusivity. Participants will gain strategies to enhance outreach, engagement, and systemic change.



Time to Talk

Program Excellence Through Research Award

Track: Education, Leadership, & Diversity

Presenter(s): Christopher Sneed, Ann A. Berry, Annette Cole, Rachel Erwin, Karen Franck, Mary Beth Henley, Sarah Kite, Rebecca Layman, Cristopher Alejandro Miramontes, Terri Orr, Michelle Parrott, Deanna Poole, Rebecca Seratt, Lisa Washburn, Amanda Woody

STATE: TN

ROOM: HERITAGE HILL, 3RD FLOOR

Using extant research and state-specific formative research collected through surveys of patients and providers in 2022, Extension faculty/ specialists developed a new health care cost program called Time to Talk.

11:45 AM

Lunch on own

Scan to view restaurant options in Grand Rapids. ➔



12:00 PM – 2:00 PM

Past National Presidents Luncheon and Meeting

ROOM: PLAZA BOARDROOM A, AMWAY GRAND

(Invitation Only)

2:00 PM – 3:00 PM

President's Reception

ROOM: AMWAY GRAND (CENTER CONCOURSE 2ND FLOOR)

(Business dress to semi-formal)

NEAFCS invites you to join us for a reception honoring President Jennifer Bridge



3:00 PM – 5:00 PM

National Awards Ceremony

ROOM: AMBASSADOR BALLROOM, 2ND FLOOR

(See National Awards Ceremony agenda on the next page.)

THURSDAY

NATIONAL AWARDS CEREMONY AGENDA

Thursday, October 23

National Extension Association of Family & Consumer Sciences invites you to a

RECEPTION HONORING PRESIDENT JENNIFER BRIDGE

2:00 PM – 3:00 PM | Amway Grand (Center Concourse 2nd Floor)

Business dress to semi-formal

CLOSING AWARDS CEREMONY

3:00 PM – 5:00 PM | Ambassador Ballroom, 2nd Floor

Opening Remarks

Jennifer Bridge, NEAFCS President

NEAFCS Hall of Fame Presentation

Jennifer Bridge

Awards Program

Donna Jung, Vice President Awards & Recognition

NEAFCS Awards Presentation

Heather Reister and Lorrissa Dunfee, Awards Ceremony Committee Co-Chairs

Recognition/Appreciation of 2024-2025 Outgoing Board Members

Courtney Aldrich – Annual Session Tri-Liaison

Samantha Roth - Annual Session Tri-Liaison

Melissa J. Rupp – Annual Session Tri-Liaison

Barb Wollan – Central Region Director

Samantha Kennedy – Southern Region Director

Christine Zellers – Vice President Public Affairs

Donna Jung – Vice President Awards & Recognition

Lance Hansen –Treasurer

Dianne Christensen – President-Elect

Rick Griffiths – Immediate Past President

Jennifer Bridge – President

Gavel Presentation

Jennifer Bridge, 2024-2025 NEAFCS President Outgoing Remarks

Dianne Chritsensen, 2025-2026 NEAFCS President Incoming Address

THURSDAY

SHOWCASE OF EXCELLENCE

Showcase of Excellence Posters will be displayed Monday through Wednesday. The optional staffed time is Wednesday from 3:15 PM - 4:15 PM.
Room: Amway Grand Hotel – Center Concourse



1) Calvert Charitable Corporation Concepts (C4)

Extension Housing Outreach Award

Track: Financial Health and Capability

Presenter(s): Troy Anderson

STATE: MD

What makes families financially secure? Many may say generational wealth. However, in the United States, this has most often been achieved through buying a home and generating equity through ownership.



2) Crisp Pre-K School Wellness Food, Fun and Reading Program

School Wellness Award

Track: Food and Nutrition

Presenter(s): Liz Clarke

STATE: GA

Crisp County Pre-K students increase food knowledge and language nutrition as well as get to taste healthy foods through the Food, Fun and Reading Program.



3) Delivering an Effective Suicide Prevention Program- Question, Persuade, Refer (QPR)

Human Development/Family Relationships Award

Track: Health and Well-being

Presenter(s): Chi Catalone, Ginger Fenton, Rozalia Horvath, Amber Otis, Maureen Ittig, Sonya Nace, Cynthia Pollich, Darlene Sansone, Laurie Weinreb-Welch, Jill Varner, Jacqueline Zitzelberger

STATE: PN

Explore how the evidence-based suicide prevention program QPR enhances participants' knowledge and confidence to assist in crisis situations. Discover strategies for implementing this curriculum to empower your communities.

4) Empowering Financial Change: Teaching and Evaluating Zero-based Budgeting Workshops

Track: Financial Health and Capability

Presenter(s): Melanie Jewkes, Amanda Christensen, Andrea Schmutz, and Lendel Narine

STATE: UT

In response to financial stress, Utah State University Extension created Budget Mastermind workshops to build financial resiliency. This session details workshop implementation, shares resources, and explores creative strategies for teaching personal finance.

5) Engaging Families Pave the Way for School Readiness

Track: Lifespan Development and Family Relationships

Presenter(s): YaeBin Kim

STATE: NV

This study examines family engagement programs that support preschoolers' school readiness. Results demonstrate significant improvements in children's school readiness skills, highlighting the critical role of early family engagement.

SHOWCASE OF EXCELLENCE, CONTINUED



6) Explaining the Safety of Low-acid Home Canning through Thermal Processing Curves

NEAFCS Endowment Grant Recipient

Track: Food and Nutrition

Presenter(s): Shauna Henley, Emily Morales, Rohan V. Tikekar, Carla L. Schwan

STATE: MD

Research-based home canning methods reliably ensure food quality and safety. Three USDA-validated low-acid home canning recipes were tested to show consumers/educators the science “behind” recipe validation.



7) Farmer’s Walk

Excellence in Teamwork Award

Track: Food and Nutrition

Presenter(s): Michelle Puckett, Mitzi Clayton, Jill Wachs, Megan Jones

STATE: AL

Teaching children about food origins, production, and nutrition fosters healthy eating choices and reduces obesity. Barbour County’s “Farmer’s Walk” event, a collaborative effort, empowered students to connect with local food systems and farmers.

AWARD ICON

8) Fostering Protective Factors among Teens through a Statewide Leadership Program

Track: 4-H and Youth Development

Presenter(s): Shannon Cromwell, Meggan Callister, Rowe Zwahlen, Pam VanWag

STATE: UT

The Junior Youth Conference leadership program empowers teens to plan and lead hands-on workshops for younger youth, fostering leadership skills, self-awareness, and practical life skills, as evidenced by survey results.

9) Fresh Connect: Produce Prescription Program

Track: Food and Nutrition

Presenter(s): Katie Schlagheck

STATE: OH

Produce prescription programs have been used as a strategy to combat health outcomes of low-income individuals. Learn about the components of starting one of these programs in a local community.

10) Guiding Tenants to Stability: RentWise Training

Track: Environmental Health and Sustainability

Presenter(s): Samantha Roth, Sara Croyman, Dung Mao

STATE: MN

The RentWise program equips service providers with skills and knowledge to assist vulnerable populations in navigating rental processes, tenant rights awareness, and landlord communication for improved housing stability.



11) Health Volunteer Engagement as a Catalyst to Improve Health

Family Health & Wellness Award

Track: Health and Well-being

Presenter(s): Heather K. Wingo, Jessica Vincent

STATE: AR

The Extension Get Fit (EGF) program is a community-based strength-training initiative in 28 counties across Arkansas. This program is designed for midlife and older adults, offering structured physical activity opportunities to improve strength, flexibility, balance, and overall well-being. The unique model empowers volunteer leaders to facilitate community exercise sessions.

SHOWCASE OF EXCELLENCE, CONTINUED



12) Improving Housing Stability Through Outreach and Education

Extension Housing Outreach Award

Track: Financial Health and Capability

Presenter(s): Lisa Hamilton, Judy Corbus, Melanie Taylor, Cyndi Longley, Katherine Allen, Halie Corbitt, Stephanie McMinds, Jenny Rodriguez, Giovanna Benitez, Terri Keith, Natasha Parks, Jill Breslawski, Jennifer Hagen, Cindi Hetz, Laura Valencia, Johanna Gomez-Gonzalez, Katherine Marin

STATE: FL

UF/IFAS Extension housing education team provides outreach, education, counseling, and referrals to help families across the state improve healthy and stable housing.



13) Improving Teamwork for a Virtual Setting

Excellence in Multi-State Collaboration Award

Track: Education, Leadership, & Diversity

Presenter(s): Joy West, Lisa Peterson, Halie Corbit, Rick Griffiths, Lori Korthals, Carrie Elsen, Roxie Price, Gina Lucas

STATE: MULTI-STATE

Success teamwork doesn't just happen. Teams need to implement proven skills and techniques to work effectively, especially on a virtual platform. This series of trainings share tools to improve teamwork.

14) Intersectionality and Food Insecurity: Unpacking the Challenges Faced by LGBTQIA2S+ College Students

Track: Education, Leadership, and Diversity

Presenter(s): Ricardo Kairios

STATE: NJ

This study explores food insecurity among LGBTQIA2S+ college students, highlighting the intersection of social determinants, inclusivity, and social support, offering strategies to enhance policies and resources for LGBTQIA2S+ students.

15) Minimizing the Impacts of Home Food Waste

Track: Environmental Health and Sustainability

Presenter(s): Bridget Morrisroe, Annie Roe, Julie Buck, Ariel Agenbroad, Catherine Milner

STATE: ID

Educators will present the environmental, social, and economic impacts of food waste. Information and tools on ways to minimize food waste in the home will be displayed and disseminated.

16) Penn State Extension Addresses Increasing Physical Activity

Track: Health and Well-being

Presenter(s): Stacy Reed, Chi, Catalone, Laurie Weinreb-Welch, Amber Otis, Elizabeth Kocsis, Sarah Davis, Rozi Horvath, Christina Pulman, Joslyn Neiderer, Kate Konkle, Susan Lechtanski, April Miller, Er Yue, Malinda Surprise, Dori Owczarzak

STATE: PA

Penn State Extension created the Everybody Walk Across (EWA) program model to help communities increase physical activity levels and accountability. Learn how this Penn State Extension's EWA program is growing.

SHOWCASE OF EXCELLENCE, CONTINUED

17) Preserving the BIG Picture: Serving Clients and Colleagues

Track: Food and Nutrition

Presenter(s): Kate Shumaker, Nicole Arnold, Lisa Barlage, Sofia Carter, Shari Gallup, Laura Halladay, Candace Heer, Melinda Hill, Emily Marrison, Melissa J. Rupp, Megan Taylor, Treva Williams, Tina McGillvary

STATE: OH

The Ohio Extension Food Preservation Team has developed a comprehensive package of resources and opportunities with a goal of supporting our colleagues and serving our clients across the state.



18) Produce for Seniors

SNAP-Ed/EFNEP Educational Program

Award

Track: Food and Nutrition

Presenter(s): Rachel O'Halloren, Emily Barbee, Melissa Cotton, Tarunjot Sethi, Sara Bridgewater, Sue Robison, Rachel Livesay, Elizabeth McGinley, Sidney Patrick, Jo Brit-Rankin, Dalton Guess, Monica Haaf, Lauren Richardson, Alyssa Alvarado, Patricia Gadson, Elen Bloomer-Thorton, Deboarh O'Neal, Clara Wayland-White, Valerie Pickering, Paula Gray, Heather Warren

STATE: MO

In 2023 and 2024, the University of Missouri Extension SNAP-Ed Outreach program has supported the Missouri Senior Farmers Market Nutrition Program to address environmental factors to accessing vegetables and fruits for SNAP-Ed eligible older adults.

19) Revitalizing Rural Communities: A Grassroots Approach to Community Development through Extension

Track: Health and Well-being

Presenter(s): Christina Garner

STATE: GA

Rural communities often struggle with rebuilding. Learn about a grassroots approach to Community Development through Extension using a Community-based Social Marketing approach to implement sustainable programming.



20) Rightsizing: Dealing with Sentimental Clutter

Environmental Education Award

Track: Environmental Health and Sustainability

Presenter(s): Susan Moore, Pamela Turner, Diane Bales, Laura Smith, Jasmine Harris-Speight, Mary Dozier, Jennifer Krafft

STATE: GA

UGA and MSU Extension used the Rightsizing curriculum to teach participants to control clutter at home to lead healthier lives and prevent indoor health hazards like mold and falls.

21) Sowing and Growing Hope: A pilot program on instilling hope in the community through Extension programming

Track: Health and Well-being

Presenter(s): Amber Allen

STATE: MO

Sowing and Growing Hope will explore the creation, implementation, and evaluation of a pilot program focused on the practical application of Hope Theory.

SHOWCASE OF EXCELLENCE, CONTINUED

22) The Impact of an Eight-Week Diabetes Management Program on Biometric Data of Individuals with Diabetes and Pre-Diabetes

Track: Health and Well-being

Presenter(s): Rebecca Elliott

STATE: FL

This presentation depicts the impact of an eight-week diabetes management program on biometric data of individuals with diabetes and pre-diabetes.



23) The Marion County Church Potluck Food Safety Program

NEAFCS Endowment Grant Recipient

Track: Food and Nutrition (Food Safety)

Presenter(s): Rebecca Mendes

STATE: FL

"The Marion County Church Potluck Food Safety Program" aims to improve food safety in church potlucks by training church members who usually bring meals to their church potlucks.



24) Tree-mendous Teachers! Early Childhood Educator Professional Development Program

Early Childhood Child Care Training Award

Track: Economic & Workforce Development

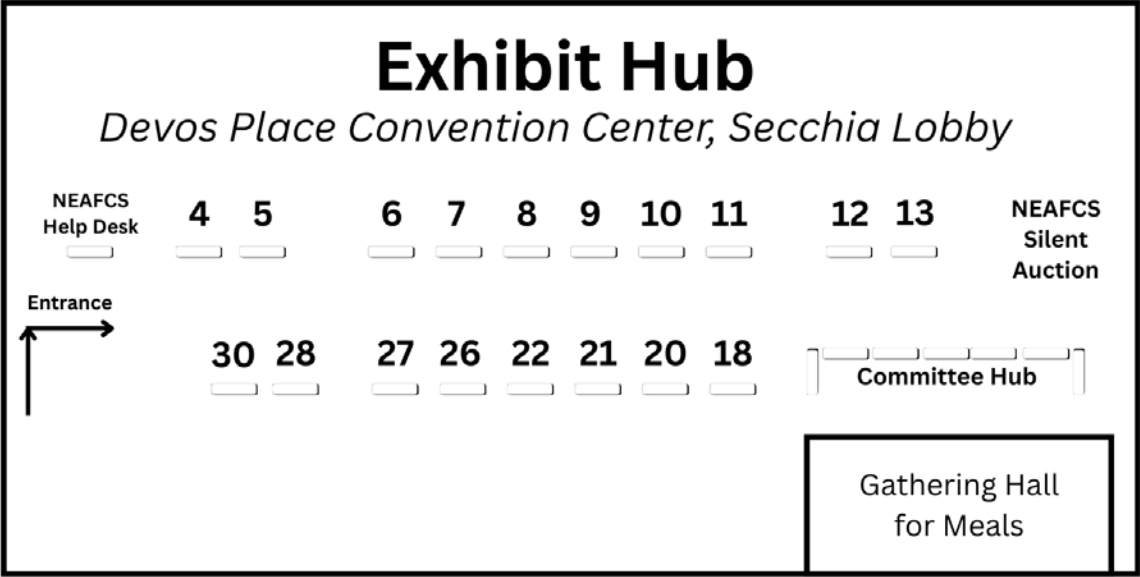
Presenter(s): Caroline Cruz, Ted Stevens, Jodi

Nerren, Jaden Kelly

STATE: TX

Let's go outside - nature is our classroom! Texas' Tree-mendous Teachers early childhood training program does just that, using trees as windows to the world to train educators of young children.

EXHIBIT HALL FLOOR PLAN



COMPANY TABLE TOP

2026 Annual Session Knoxville, TN 12

Alzheimer’s Association 30

American Association of Family & Consumer Sciences 20

American Income Life 21

Canopy, A Public Benefit Company 4

Iowa State University Extension & Outreach Health and Human Sciences 10

Money Habitudes, LLC 22

National Presto Industries, Inc 28

Newell Brands (Ball Home Canning) 8

COMPANY TABLE TOP

National Restaurant Association9

Oklahoma State University Co-Parenting for Resilience7

OneOp5

Realityworks, Inc.6

Southern Peanut Growers. 11

Tennessee Affiliate of NEAFCS 13

Texas A&M AgriLife Extension 27

The Dibble Institute 18

USDA National Institute of Food and Agriculture 26

ANNUAL SESSION EXHIBITORS

2026 Annual Session, Knoxville, TN

Table Top # 12

Tennessee invites you to their booth to introduce Tri Star Traditions and get a sneak peek at the exciting plans for the 2026 NEAFCS Annual Session in Knoxville.

Alzheimer's Association

Table Top # 30

225 N. Michigan Ave
Chicago, Illinois 60601
Phone: (757) 287-5365
Email: saklym@alz.org
Website: www.alz.org

The Alzheimer's Association leads the way to end Alzheimer's and all other dementia - by accelerating global research, driving risk reduction and early detection, and maximizing quality care and support

American Association of Family & Consumer Sciences (AAFCS)

Table Top # 20

1410 King St. 2nd Floor
Alexandria, VA 22314
Phone: (703) 706-4600
Email: kathanas@AAFCS.org
Website: www.aafcs.org

The American Association of Family & Consumer Sciences, founded in 1909, is the only professional association dedicated to Family & Consumer Sciences students and professionals who represent multiple practice settings and content areas.



American Income Life Special Risk Division

Table Top # 21

PO Box 50158
Indianapolis, Indiana 46250
Phone: (317) 436-1005
Email: efbain@ailife.com
Website: <https://www.ailife.com/specialriskdivision>

The AIL Special Risk Division provides blanket group accident insurance policies for all Cooperative Extension groups and programs nationwide. We have specialized in working with Extension for over 70 years and pride ourselves on personal and professional service.

Canopy, A Public Benefit Company

Table Top # 4

120 North Juliette Ave
Manhattan, Kansas 66502
Phone: (785) 706-9292
Email: info@canopyteam.org
Website : <https://canopyteam.org/>

PEARS is an essential tool for organizations dedicated to community outreach and impact measurements. It is a comprehensive, user-friendly, scalable platform to track and evaluate the impact of community engagement.

Iowa State University Extension & Outreach Health and Human Sciences

Table Top # 10

400 Central Ave NW, Ste 700

Orange City, IA 51041

Phone: (712) 360-1740

Email: lorikort@iastate.edu

Website: <https://www.extension.iastate.edu/>

Iowa State University Extension & Outreach Health and Human Sciences showcase their new and innovative products for collaboration and connection

Money Habitudes, LLC

Table Top # 22

1850 Lee Rd Suite 122D

Winter Park, FL 32789

Phone: (941) 444-9189

Email: info@moneyhabitudes.com

Website: www.moneyhabitudes.com

Money Habitudes puts the 'person' in personal finance. Available as a physical card deck or online assessment, it helps financial practitioners uncover clients' habits, attitudes, and motivations around money to empower better financial decisions. We also provide training and support materials to help you confidently use the assessment.

National Presto Industries, Inc.

Table Top # 28

3925 North Hastings Way

Eau Claire Wisconsin 54703

Phone: (715) 839-2029

Email: bmilkert@gopresto.com

Website: www.gopresto.com

National Presto Industries dates back to 1905 when the company began manufacturing industrial size pressure canners known as "canner retorts". Today Presto remains a recognized industry leader in home food preservation. Stop by our Tabletop to view appliances, receive educational materials, and enter drawing.

National Restaurant Association

Table Top # 9

2055 L St. NW, Suite 700

Washington District of Columbia 20036

Phone: (312) 261-5350

Email: eweiss@restaurant.org

Website: www.restaurant.org

The National Restaurant Association (NRA) offers training and certification programs, notably ServSafe for food safety, and helps develop the industry's workforce through resources and career programs. American Hotel & Lodging Educational Institute (AHLEI) is part of the NRA, a global leader in hospitality education, training, and certification.



Newell Brands (Ball Home Canning)

Table Top # 8

5 Concourse Parkway NE 8th Floor
Atlanta, GA 30328
Phone: (404) 807-9046
Email: ashley.pierce@newellco.com
Website: www.healthycanning.com

Home canning mason jars, closures, accessories, and dry food storage

Oklahoma State University Co-Parenting for Resilience

Table Top # 7

233 Nancy Randolph Davis Building
Stillwater, OK 74078
Phone: (405) 744-8428
Email: coparenting@okstate.edu
Website: coparenting@okstate.edu

OSU Extension's Co-parenting for Resilience equips divorcing parents with research-based tools to support their children's adjustment. States can partner with OSU to expand access to this proven online and in-person curriculum to better serve families experiencing divorce.



OneOp Table Top # 5

210 Spidle Hall 261 Mell St
Auburn University
Auburn, AL 36849
Phone: (334) 440-1502
Email: contact@oneop.org
Website: www.oneop.org

OneOp is an online professional development platform that builds the capacity of Extension agents and educators to support their local military family population. Our research-based webinars, courses, and podcasts are designed to provide ongoing growth and development for all service providers from multiple disciplines working with military families across the Military Family Readiness System.

Realityworks, Inc.

Table Top # 6

2709 Mondovi Rd
Eau Claire Wisconsin 54701
Phone: (800) 830-1416
Email: information@realityworks.com
Website: www.realityworks.com

Realityworks is an employee-owned company based in Eau Claire, Wisconsin that specializes in creating experiential learning tools for education and career preparation. Originally founded in 1994 as Baby Think It Over, Inc., the company gained recognition for its RealCare® Baby infant simulator, designed to teach parenting and teen pregnancy prevention

Southern Peanut Growers Table Top # 11

1025 Sugar Pike Way
Canton, GA 30115
Phone: (770) 309-7018
Email: hello@peanutbutterlovers.com
Website: peanutbutterlovers.com
Contact: Leslie Wagner

Representing peanut farmers, we believe in the power of peanuts. From sustainable farming practices from a tasty way to deliver good nutrition and protein for a healthy lifestyle, we have the curriculum, allergy management and recipes you need.

Tennessee Affiliate of NEAFCS Table Top # 13

UT Extension - Hardin
PO Box 396
Savannah, TN 38326
Phone: (731) 925-3441
Email: sganus@utk.edu
Annual Awards Corsages

Texas A&M AgriLife Extension Table Top # 27

17360 Coit Rd
Dallas, TX 75252
Phone: (972) 952-9276
Email: nutritionhub@ag.tamu.edu
Website: www.nutritionhub.tamu.edu/

The Nutrition Hub network's primary goal is to enhance and expand the reach of USAD initiatives related to Extension through application of precision nutrition

The Dibble Institute Table Top # 18

728 Coventry Rd
Kensington, California 94707
Phone: (800) 695-7975
Email: relationships@skills@dibbleinstitute.org
Website: www.dibbleinstitute.org

The Dibble Institute provides research-based programs to equip youth with skills for healthy relationships, emotional well-being, and future success. Featured programs include Love Notes, which helps teens make wise relationship choices, and mind matters, which builds resilience and coping skills. Explore free resources and proven curricula at Dibbleinstitute.org

USDA National Institute of Food and Agriculture Table Top # 26

805 Pennsylvania Ave
Kansas City, Missouri 64105
Phone: (330) 810-6111
Email: Martha.Sartor@usda.gov
Website: www.nifa.usda.gov

Through scientific research and its application; strategic partnerships with federal, state, and local agencies; extension education; and preparing the next generation of Family and Consumer Sciences professionals, USDA NIFA's Division of Family and Consumer Sciences (DFCS) advances family well-being and community vitality across the nation.



1. Attendee Exclusives
Enjoy special restaurant and attraction discounts. Start by scanning the QR code below.
ExperienceGR.com/Exclusives



2. Great Food
Taste the farm-fresh flavors of Michigan's Best Food City & a Top 20 U.S. Foodie City.
ExperienceGR.com/Food



3. Downtown
Explore 200+ restaurants, shops & entertainment venues on foot or FREE bus. ExperienceGR.com/Downtown-Map



4. Free DASH Bus
Look for the pink DASH bus as it makes its way around downtown.
ExperienceGR.com/DASH



www.neafcs.org

LEADERSHIP
Builds leaders for the future.

RECOGNIZE
Recognizes and promotes excellence and scholarship in Extension Family and Consumer Sciences programming.

GROWTH
Provides innovative professional growth and development opportunities.

RESOURCE
Serves as a nation-wide resource for education, information, networking and partnerships.

PROMOTE
Promotes Extension Family and Consumer Sciences and the mission and goals of the Land Grant University Extension System.

NEAFCS

The National Extension Association of Family and Consumer Sciences (NEAFCS) educates and recognizes Extension professionals who impact the quality of life for individuals, families and communities.

**NETWORK,
GROW,
SUCCEED!**

THE NEAFCS CREED

As an Extension educator, my prime concern is people. I believe it is my responsibility to give the best of my ability and develop myself to be an effective educator. I accept the opportunity to empower individuals, families, and communities to meet their needs and goals through a learning partnership. May I always be willing to accept the challenges of the changing times.

ENDOWMENT DONORS

DIAMOND - OVER \$10,000

Anna-Mae Kobbe, MD - in memory of Jane Taylor NEAFCS Past President 1985-1986 and Robert Dothage, in honor of Donna Donald

Donna K. Donald, IA - in memory of David E. Donald, in memory of Charlotte Young

Yvonne Steinbring, CA

OPAL - \$1,000 - \$4,999

Arkansas Affiliate - NEAFCS - in memory of Dr. Lynn Russell

Arizona Affiliate - NEAFCS - in honor of retirees, Cynthia Flynn, Lynne Durrant and Victoria Steinfelt

Arizona Affiliate - NEAFCS - in honor of Sharon Hoelscher Day

Betty Parks Strutin, PA - in memory of June Wilke Snyder

Barbara Eichner-Maidment, Western Australia

Carol C. Schlitt, IL - in memory of Robert Dothage

Christine Kniep, WI - in honor of Wisconsin Affiliate

Colorado Affiliate - NEAFCS

Deloris Pourchot, VA - in honor of Anna-Mae Kobbe

Frances Watts Torbeck, OR

Illinois Affiliate - NEAFCS - in honor of Past National Presidents from Illinois

Iowa Affiliate - NEAFCS - in honor of Sandra McLain, in memory of Dr. Barbara Woods on behalf of Iowa Affiliate and Iowa State University Extension and Outreach

Jan Harwood, MI

Jean Clarkson-Frisbie, KS

Jennifer Bridge, KY

Johanna O. Hahn, VA - in memory of Edward J. and Lilian H. Oresky

Judy Hetterman, KY

Karen Ensle, NJ - in memory of Doris Ensle and Richard Ensle

Kentucky Affiliate - NEAFCS - in honor of Kentucky Affiliate members

Luann Boyer, CO - in memory of Brian Schlitt

Mabel I. Ito, HI

Margaret Warren, LA

Marsha A. Goetting, MT

Mary Ann Lienhart Cross, IN - in memory of Mike L. Cross, in honor of Donna Donald

Mary Blackburn, CA - in memory of Kourtland Adam Blackburn, in memory of Dr. Dorina Espinosa

Mary L. Heisler, WI

Minnesota Affiliate - NEAFCS

Missouri Affiliate - NEAFCS

Missouri Affiliate - NEAFCS - in honor of Past and Current National Officers from Missouri

Nancy Gruel Nehring, FL

New Jersey Affiliate - NEAFCS

North Carolina Affiliate - NEAFCS - in honor of Marilyn Gore

Ohio State University Extension - Ashtabula County - in honor of Cheryle Jones Syracuse

Oklahoma Affiliate - NEAFCS - in memory of Brian Routh from all of your Oklahoma Extension family to honor his and her great love

Patricia Powley, PA - in memory of Helen Tunison

Raygene Paige, TN - in memory of Jackie Beard

Rita T. Wood, NJ - in memory of Carmela Darpino Travaglione

Samantha Kennedy, FL

Sandra McLain, IA

Sharon Hoelscher Day, AZ - in memory of colleagues and friends - Patsy Glass, OH; Ruth Paine, OH; Myra Philpot, OH; Sharon Blaše, NJ; Pat Margolis, KY

Theresa Mayhew, NY - in honor of Julie Garden-Robinson, in honor of Jeanne Winters, in honor of Barbara Henza and Diane Whitten, in honor of Rick Griffiths, in honor of my grandson Julian Joseph Mayhew, in honor of recent Hall of Famers - Karen Ensle and Susan Routh, in memory of Dr. Barbara Woods

Texas Affiliate - NEAFCS - in honor of the 2021 President's Charity, in honor of Texas Extension Association of Family and Consumer Sciences

AMETHYST - \$500 - \$999

Alabama Affiliate - NEAFCS

American Association of Family & Consumer Sciences - in honor of NEAFCS's 75th Anniversary

Amy Peterson, NE

Andrea Bressler, PA

Ann Hamilton, NH

Barbara Tricinella, OK

Barbara J. Wollan, IA

Barbara Woods, IA

Beatrice M. May, NJ

Beverly Koenig, OH

Carol S. Miller, OH

Charlotte Young, IA

Colleen Gengler, MN

Darsene Baggett, NJ

ENDOWMENT DONORS, CONTINUED

Eleanor Matthews, AL - in honor of Sharon Hoelscher Day

Emily Remster, IN

Gerald W. Warmann, SD

Glenda Hyde, OR – in memory of Carolyn Raab

Indiana Affiliate – NEAFCS

Indiana Extension Educators Association – FCS

Judy Breland, MS - in memory of Debra Cottrill's father and aunt and Carol S. Miller's mother

Julie Holman, FL

Karen Dickrell, WI – in honor of the 90th Anniversary

Katherine Shumaker, OH

Kathy Dothage, MO – in memory of Brian Schlitt

Lisa Guion, NC

Lynas K. Waun, MI

Mariah B. Brymer, AL

Marilyn Tileson

Martha M. Pile, TN

NEAFCS National Board - 2005-2006 National Board; 2005-2006 National Board - in memory of Lois West; 2010-2011 National Board

NEAFCS Past Presidents - 2005 Past Presidents; in memory of Virginia Zirkle; Past Presidents - Donna Donald, Barbara Tricinella, Emily Remster, Cheryl Syracuse, Chris Kniep; in memory of Dianne Lennon; in memory of Evelyn Morrow Lededeft; in memory of Jean Clarkson-Firsbie; in memory of Kathryn Everson; in memory of Mary W Donnini; in memory of Bev Kindler and Charlotte Young (NEAFCS Past Presidents); in memory of Genevive Harris (NEAFCS Past President)

Pennsylvania Affiliate – NEAFCS – in memory of Shirley Bixby

Phyllis M. Northway, WI

Sharon Blase, NJ

University of Arizona Department of Nutritional Sciences - in honor of Sharon Hoelscher Day

Virginia Affiliate – NEAFCS – in memory of Judy Midleiff and Celia Haghoe

Virginia T. Hall, WI

TURQUOISE - \$100 - \$499

Adele R. Collier, NJ

Alice Henneman, NE

Amy Ressler, TX

Anita Rohde, ND

Ann H. Davis, MS – in honor of Susan Cosgrove

Ann Fontes, HI

Ann Rhinesmith, NJ

Ann Vail, KY

Anne Field, MI

Barbara O'Neill, NJ

Beverly Jackey, MD

Beverly Kindler, KS

Bonnie Braun –MD - in honor of Dr. Anna-Mae Kobbe

Bonnie Jo Westendorf, NY

Brenda Miller, OK – in honor of Barbara Tricinella, in honor of Susan Routh, in memory of Lynda Harriman, in memory of Brian Routh

Bridget Morrisroe, ID

Caitlin Mellendorft, IL

California Affiliate – NEAFCS – in honor of each CA member in 2022

Carla Bush, TN – in honor of Jane Gault as Past President & National Officers from TN

Carla Farrand, CO

Carol Chandler, OH

Celvia Stovall, AL

Cindy Davies, NM

Claudia Mincemayer, PA

Cynthia Thompson, IA – Kent and Cindy in honor of Donna Donald, in memory of Dr. Barbara Woods

Danielle Day, IA

Daryl Minch, NJ

Deidre Wagster, IN

Denise Sullivan – in memory of Sharon Mozen and in honor of Carolyn Jackson

Denyse Variano, NY

Diana Fair, MI

Diana Milne, MO

Diane V. Brown, PA

Diane Neilson, KS

Dianne Gertson, TX – in memory of Madeleine Bochat, in memory of Brian Routh

Dianne Lambert, VT

Dianne Lennon, NJ

Donna Peterson, WI

Doris Rogers, NC

Doris Taylor, FL

Doris Wetters, FL - in memory of Bea Paulucci

Edith Reisler, PA

Elizabeth Andress, GA

Emily Grace Marrison, OH

Erika Bochat, TX

Evelyn Adams, IN

Faith Calahan, SD

Faytie Johnston, NC

Felice Acker, TX

Florence Minifie, NJ

Frances Watts Alloway, PA

Frederica Seaman, TX

Gail Brand, NE

Gayle Muggli, MT

Genevieve Harris, MS

ENDOWMENT DONORS, CONTINUED

Gisele Jefferson, OH	Kathleen Savoie, ME - in honor of Helen Mohn	Marcia Parcell, IN
Glenda Wentworth, CO	Kathryn Wolters, IL	Margaret Van Ginkel, IA
Glenn Sturm, VA	Kathy Brandt, MN	Margie Memmott, UT
Glinda Leach, KS	Kathy Oliver, OH	Maria Young, NJ
Helen Carter, GA	Kathy Roesel Byrnes, KY - in memory of 4 Northern KY Agents, in honor of Judy Hetterman	Marilyn Bischoff, ID
Ida Marie Snorteland, SD	Kimberly Edmonds, VA	Marilyn Gore, NC
Idaho Affiliate - NEAFCS	LaDonna Hines, OK - in honor of Kristy Spalding, in honor of Susan Routh	Marsha Lockard, ID
Ilene C. Miller, TX	Lana Anderson, WI	Mary Kizer, AR - in memory of Mary Elnora Wojtek Appelt
Irene Leech, VA	Laura Jolly, IA - in honor of Human Sciences Extension and Outreach at Iowa State University	Mary J. Sullivan, KS
J.B. Hamilton, MD	Linda Byster, NY	Mary Pattison, FL - in memory of Dr. Anne Rideout
Jacqueline Wilkins, OH - in memory of Marilyn Spiegel	Linda Gossett, ID	Maryland Affiliate - NEAFCS
Jane Beigtol, PA	Linda Holmquist, KS	Maudie Kelly, MO
Jane Jett, IN	Linda Huyck, MI	Melanie Hart, OH
Jane Schuchardt, VA	Linda S. Law-Saunders, NY	Melissa J. Rupp, OH
Jane Ann Stout, IA	Linda Mohr, MO - in honor of Donna Donald	Mississippi Affiliate - NEAFCS
Janet Johnson, AL	Linda Wells, TX	Nancy Porter, VA
Jayne McBurney, NC	Lisa McCoy, MD	Nancy Stehulak - Ohio EAFCS - in honor of Carol Chandler's Retirement
Jean Childers, NC	Lisa Peterson, IL	Naomi Bechtold, IN
Jeanne H. Green, NY	Lynda Latta, OK - in memory of Recia Garcia	Nevada Affiliate - NEAFCS
Jessica Hill, GA	Lori Bouslog, IN	New Mexico Affiliate - NEAFCS
Joan Chong Joan Younce, IN	Lori Korthals, IA - in honor of Donna Donald	New York Affiliate - NEAFCS - in honor of Josephine Swanson, in honor of Theresa Mayhew
Joi Vogin, MD - in memory of Michael Elonge	Lori Sporer, KS	Nina Roofe, AR
Judith C. Kovack, TN	Louise Kirkland, AZ	North Dakota Affiliate - NEAFCS
Judy Marks	Louraiseal McDonald, TX - in honor of Louise W. McDonald, in memory of Fonta Conway	Nyla Musser, WI
Judy Matlick, WV	Lynn C. Russell, AR	Ohio Affiliate - NEAFCS - in honor of past national presidents - Nelle Watts, Virginia Zirkle, Cheryle Jones Syracuse
Julia Brock, SC	Madeline Crouch, TX - in honor of the 2006-2007 National Board, 2007-2008 National Board, 2008-2009 National Board, 2009-2010 National Board, Memory of Bob Dothage	Owaissa Heimann, NM
Julia Zee - in memory of Kikuye Kohashi		Patricia Brinkman, OH
Julie Garden-Robinson, ND - in honor of our predecessors who launched this association many years ago		Patty Merk, AZ
June James, SD		Peg Ehlers, IN
Karen Bruns, OH		Peggy Powell, KY - in honor of Dr. Ann Vail
Karen Mort, NY		Peggy Prucnal, AL
Karen Thomas, PA		
Karma Metzgar		
Katherine J.T. Humphrey, NY		

ENDOWMENT DONORS, CONTINUED

Phyllis Lewis, WV
 Phyllis Wright, PA
 Rebecca Travnichek, MO
 Rhea Bentley, GA
 Roberta Moseley, NJ
 Ruth Jackson, AZ
 Ruth O'Conner, PA
 Sandra Fry, TX
 Sara (Sally) Garrett, TX
 Sharon McDonald, PA
 Shaundra Ziemann-Bolinske, ND -
 in memory of Arthur and Adeline
 Ziemann, and in honor of Roxie
 Price
 Sheila Gains, CO
 Shirley Barber, MN - in memory
 of Delos Barber, Michael Blaze,
 Myrna Shearer, John Remster,
 Shirley Tisdale
 Silvia Vilches, AL
 Sonja Koukel, NM
 South Dakota Affiliate – NEAFCS
 Stella McKinstry, WY
 Susan Glassman, IL
 Susan Morris, MD
 Susan Routh, OK – in honor of
 Betty Brannan, in honor of Dr.
 Gina Peek
 Susan Taylor, IA
 Suzanne Driessen, MN
 Terrie James, AR
 Tommie Lou Hunter, VA
 Troy Anderson, MD
 Utah Affiliate - NEAFCS
 Vickie J. Hadley, IN
 Vicki Hayman, WY
 Virginia H. Muth, FL
 Virginia Zirkle, OH
 Wisconsin Affiliate – NEAFCS
 Wyoming Affiliate – NEAFCS

TOPAZ - UP TO \$99

2008 NEAFCS Program Excellence
 Through Research Award, First
 Place National, Team Members:
 Elizabeth Reames, Team
 leader, Alexis Navarro, Bertina
 McGhee, Sally Soileau, Terri
 Crawford, Sheila Haynes, Berteal
 Rogers, De'Shoin Friendship,
 David Bankston, Mike Keenan,
 Georgianna Tuuri, Katie Dean,
 Melissa Mixon, Easter Tucker
 Abigail Pritchard, TX
 Aneta Eichler, TN
 Anonymous Donation - in honor
 of Dr. Anna-Mae Kobbe
 April Martin, TN
 Ardala Littlefield, WI
 Audrey C. Burkart, NJ
 Barbara Ann Miller, PA
 Barbara Gilbert, OH
 Barbara Lambert, SC
 Bernadette Darrow, VA
 Bernice Mason, MT
 Bertrille Lomax, VA
 Beth Bell, TN
 Beth Van Horn, PA
 Bette Parker Thornton, VA
 Bettie Wolfe Collins
 Betty Gottler, AL
 Betty Jean Brannan, OK
 Beverly Ann Shelby, TN
 Beverly Doll, WI - in honor of
 Jane Gault as Past President &
 National Officers from TN
 Bonnie Tazewell, VA
 Brenda Schmitt, IA
 Brooke Hogancamp, KY
 Candace Carrie, AR
 Carla Carter, KY
 Carol Bralich, WI
 Carole Rison, KY

Carole Russell, OK
 Carolyn Jackson, KS
 Cathy Martinez, AZ
 Celia Hayhoe, VA
 Charlotte Coffman, NY
 Charlotte Crawford, MO – in
 memory of Brian Schlitt
 Charlotte Shoup Olsen, KS - in
 honor of Anna- Mae Kobbe
 Cheryl Kleckner, OH
 Cheryl Spires, OH
 Christi Demitz, MI
 Christine Rivera, KY
 Christine Venema, MI
 Cindy Baumgartner, IA
 Claudia Boozer-Blasco, NH
 Connecticut Affiliate - NEAFCS
 Cristin Sprenger, VA
 Cynthia R. Strasheim, NE
 Dan McDonald
 Darlene Minniefield, AL
 David Brown, IA - in honor of
 Donna Donald
 Deanna Sweat, KS
 Deanna Tribe, OH
 Deborah Maes, NH
 Debra Cottertill, KY
 Denise J. Brandon, TN
 Denise Wyland, IA
 Diana Romano, OK
 Diane Reinhold, IL
 Diane Whitten, NY
 Dianne Christensen, NM
 Dianne Lamb, VT
 Dianne M. Swanson, NE
 Dolores Dixon, MD
 Don Bower, GA
 Donna Andrusyk, IA
 Donna Jung, OK

ENDOWMENT DONORS, CONTINUED

Doris Herringshaw, OH	Janet Burnett, MO – in memory of Brian Schlitt	Kyleigh Sullivan, MO
Dorothy Eyberg, IA - in honor of Donna Donald	Janet Cover, MD	Laura Sant, ID
Dorothy Martin, CO	Janet H. Johnson, KY	Laura Stanton, OH
Dorothy Simmons, TN	Janet LaFon, MO	Laurie J. Boyce, WI
Eileen Krumbach, NE	Janet Stephens, KS	Laurie Welch, PA
Elaine Smith, PA	Janice Shelton, AZ	Leesa Woods Calvi, TX
Elizabeth Baker, NC – in memory of Fran Ward	Janice Stoudnour, PA	Leslie Workman, KY
Elizabeth R. Bare, WV	Jeanice Cress, KS	Licking River Area FCS Agents, KY
Elizabeth Cornelius, GA	Jeanne Winters, NY – in honor of Theresa Mayhew	Linda Block, AZ
Ellawese McLendon, NJ	Jennifer Shukaitis, NJ	Linda Cook, FL
Ellen Bjelland, ND	Jessica Trussell, MO	Linda Floyd-Chappell, MO
Erin Ludwig, IA	Jill Weber, IA	Linda Olson, WI
Esther Shoup, CT	Joanne Kinsey, NJ	Linda P. Stephens, KY
Etta Mae Westbrook, TN	Josephine Swanson, NY	Lisa Barlage, OH
Evelyn Deloatch, NC	Joy Purkeypile, KS	Lisa Fishman, ME
Faye Rosselle, ME	Joyce Alves, AZ	Liz Espie, TX
Forsyth County ECA	Joyce McGarry, MI	Lois Carlson, KS
Frieda K Heinly, KS	Judi Merkel, IN	Lois Hunt, IA
Freida Terrell, NC	Judith Carlson, IA	Lois Killcayne, PA
Gayle Whitworth, FL	Judy Branch, VT	Lora Lee Frazier Howard, KY
Genevieve Berry, MS	Judy Corbus, FL	Lorie Garcia, TX
Georgia Burton, KY	Kansas Affiliate - NEAFCS	Lorrie Coop, TX
Georgia Williams, MS	Karen DeZarn, TX	LuAnn Duncan, FL
Gertrude Dougherty, PA	Karen Joos, WI	Lynne Beam, NM
Grace M. Angotti, KY	Karen Munden, VA	M. Dale Steen, VT
Helen Williams, GA	Kate Decker, MO	Mackenzie Johnson, IA – in honor of Donna Donald
Hilda Lytle, TN	Kathleen Olson, MN	Maine Affiliate – NEAFCS
Ida Fay Winters, OK	Kathy Riggs, UT	Mandel Smith, PA – in memory of Eloise H. Jones, in honor of Ethel Johnson
Ivelisse Colon, NC	Kathy Tharman, KS	Marcia Jess, OH – in honor of Nancy Stehulak
Jackie Ogden, GA	Kay Webb Burke, VA - in honor of Mary Helen Loftin	Marciel Klenk, CA
Jacquelyn McLaughlin, TX	Kendra Freeman, IN	Marian Anderson, MN
Jan Floeter, WI	Kikuye Kohashi, HI	Marion G. Rutan, NY
Jan Nixon, CO	Kim Greder, IA	Martha Flanagan, KS
Jane Henderson, VA	Kristin Bogdonas, IL – in memory of Marjory Groves	Martha Shireman, IN
Jane Horner, IN	Kristy Spalding, OK	Mary A Patterson, IA
Jane Landis, PA		

ENDOWMENT DONORS, CONTINUED

MaryBeth Hornbeck, GA	Pat Swartzlander, IA	Sheila Craig, MN
Mary Beth Kaufman, IA	Patricia Brennan, NJ	Sherri Cirignano, NY – in honor of Dr. Kathleen Morgan
Mary Elizabeth Ouzts, SC	Patricia Bruschini, GA	Shirley Tisdale, AK
Mary Ellen Fleming, CO	Patricia Gerhardt, KS	Shirley Whitten, AL
Mary Janette Mueller Temple, IA	Patricia Steiner, IA	Sonia Butler, NJ
Mary K. Warner, NE	Paulelda Gilbert, IA	Sonya Patterson, NC
Mary Kohli, WA	Phyllis C. Stainback, NC	Soyeon Shim, AZ - in honor of Sharon Hoelscher Day
Mary Liz Wright, IL	Phyllis Zalenski, IA – in honor of Donna Donald	Surine Greenway
Mary Novak, WI	Pratt Co. R & E, KS	Susan E. Brown, NE
Mary Weinand, IA	R. Beth Burke, MO	Susan Crusey, OH
Maureen Quinn Lores, OR	Rebecca Gartner, VA	Susan Hansen, NE
Melanie Jewkes, UT	Recia Garcia, OK	Susan McDonnell, IA
Melanie Taylor, FL	Rhoda Barnett, IA	Susan Pickle, AR
Melinda Daily, KS - in honor of Jean Clarkson-Frisbie	Richard Kairios, NJ – in honor of Karen Ensle	Susan Plassmeier, IN
Metta Pfliger, ND	Rick Griffiths, NM	Susan Zies, OH – in honor of Nancy Stehulak
Michelle Wright, TX	Robin Kuleck, PA	Talley Sowell, SC
Mindy Mayes, IN	Robin Maille, OR	Tameka King, AL
Mindy McCulley, KY	Robin Rex, PA	Tammy Jones, OH
Miriam Ward, NJ	Rose Ford, FL	Tara Brown, OK
Molly Hoag, IN	Rosemary K Heins, NM	Tarasha Daren-McKoy, NY
Myra Philpott, OH	Roxie Dinstel, AK	Tennessee Affiliate - NEAFCS
Nancy Covert, NC	Rozalia Horvath, PA	Teresa Clark-Jones
Nancy E. Schuster, KS	Sally Hope Park-Hageman, SD	Terry Toombs, LA
Nancy Stevens, PA	Sara Croymans, MN	Theresa K. Ross, CO
Nancy Urbanec, NE	Sara R Dukes, GA	Tonya Poncik, TX
Nancy Vance, WI	Sara Sprouse, IA	Vera Stokes, IA
Nannette Armstrong, IL	Shannon Lindquist, MI	Vermont Affiliate - NEAFCS
Natalie A. Thomas, AK	Sharolyn Jackson, KS	Vicki Hayman, WY
Nettie Ruth Brown, FL	Sharon Johnson, IA	Wendy Dahl, FL
Norma Morgan, IA	Sharon Mader, OH	Wilma Ruffin, AL
Northern Kentucky Agents – NEAFCS - in honor of Judy Hetterman	Shauna Henley, MD – in honor of the 90th anniversary of NEAFCS	Wilton W. Wells, VA - in memory of Mary W. Wells

Thank you for your generous donation to our NEAFCS Endowment to support leadership and professional development. If you would like to see your name on this list, complete the Donation Form on the NEAFCS website today!

SESSION / WORKSHOP NOTES

Session 1 Notes:

Session/Workshop Title: _____

What did I learn? _____

What will I apply to my work? _____

Session 2 Notes:

Session/Workshop Title: _____

What did I learn? _____

What will I apply to my work? _____

Session 3 Notes:

Session/Workshop Title: _____

What did I learn? _____

What will I apply to my work? _____

Session 4 Notes:

Session/Workshop Title: _____

What did I learn? _____

What will I apply to my work? _____

SESSION / WORKSHOP NOTES, CONTINUED

Session 5 Notes:

Session/Workshop Title: _____

What did I learn? _____

What will I apply to my work? _____

Session 6 Notes:

Session/Workshop Title: _____

What did I learn? _____

What will I apply to my work? _____

Session 7 Notes:

Session/Workshop Title: _____

What did I learn? _____

What will I apply to my work? _____

Session 8 Notes:

Session/Workshop Title: _____

What did I learn? _____

What will I apply to my work? _____

SESSION / WORKSHOP NOTES, CONTINUED

Session 9 Notes:

Session/Workshop Title: _____

What did I learn? _____

What will I apply to my work? _____

CONNECTIONS MADE

Connection 1:

Who did I meet that is new to me? (name and contact info): _____

What did I learn about them? _____

Did I make plans to connect with them after the conference? _____

Connection 2:

Who did I meet that is new to me? (name and contact info): _____

What did I learn about them? _____

Did I make plans to connect with them after the conference? _____

Connection 3:

Who did I meet that is new to me? (name and contact info): _____

What did I learn about them? _____

Did I make plans to connect with them after the conference? _____

[illegible]


NOTES

This image shows a single sheet of white paper with horizontal blue ruling lines. The lines are evenly spaced and run across the width of the page. There are no margins, text, or other markings on the paper.

SPARK Excellence Support the NEAFCS Silent Auction!

One of the most exciting parts of the NEAFCS Annual Session is celebrating the outstanding achievements of our members. Did you know these awards are made possible through the fundraising efforts of the Awards and Recognition Committee?

Join the Fun – Support the Silent Auction!

 Silent Auction - One Day Only!

 Wednesday, October 22 |  11:30 AM – 5:30 PM

 Exhibit Hall

As you explore the vendors, stop by our Silent Auction tables and place your bids! Come back often to outbid your competition and snag your favorite items.

50/50 Raffle

Don't miss your chance to win big while giving back. Purchase your tickets throughout the day and join us for the ticket reveal at 5:30 PM in the Exhibit Hall.

Your participation directly supports the recognition of excellence within NEAFCS. Thank you to everyone who donates, bids, buys raffle tickets, and volunteers
— **you make it all possible!**



Tri-Star Traditions

Uniting Service, Community, and Volunteerism for Change



Annual Session

KNOXVILLE, TN ★ Sept. 28 - Oct. 1, 2026

SAVE THE DATE!