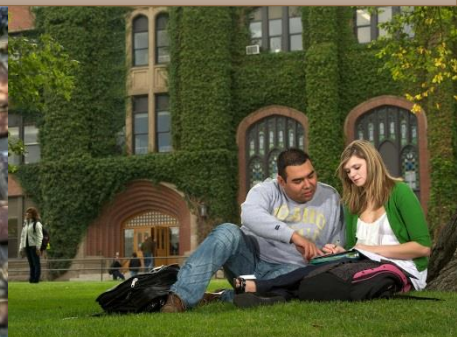


Director/School of Family & Consumer Sciences

College of Agricultural and Life Sciences
University of Idaho
Moscow, Idaho

January 2018



University of Idaho
College of Agricultural *and* Life Sciences

www.uidaho.edu/cals

THE OPPORTUNITY

The **Director/School of Family & Consumer Sciences** provides leadership to the School of Family & Consumer Sciences (FCS) of the College of Agricultural and Life Sciences.

The Director is administratively responsible to the Dean of the College of Agricultural and Life Sciences and works collaboratively with the other Directors and Department Heads of the college. The position responsibilities include:

Administration: (50%)

The Director will provide visionary leadership for all School of Family & Consumer Sciences (FCS) programs while ensuring FCS vision and goals are compatible with those of the college and the university. Lead efforts to grow student enrollment and retention in all FCS programs, coordinating recruitment efforts of faculty and staff, and working collaboratively with University and College staff and programs. Mentor FCS faculty and provide professional development opportunities to grow external funding support of research and scholarly activities. Ensure effective and transparent policies exist within FCS for faculty and staff evaluations, promotion and tenure evaluations, mentoring, space and budget allocation and other departmental activities within the guidelines of the University Faculty and Staff Handbook, other university and college policies. Effectively manage the needs of accredited programs, as well as an on-site child development laboratory program. Serve as part of the College of Agricultural & Life Sciences (CALs) Leadership team. Conduct annual faculty and staff performance evaluations as well as faculty evaluations for tenure and promotion, and provide mentorship and guidance toward career development of all faculty and staff. Maintain fiscal integrity of the School of Family and Consumer Sciences, allocating resources among program areas and in support of unit, college, and university goals.

Extension/Outreach: (30%)

The Director is expected to steward, develop and enhance relationships and partnerships with FCS alumni and stakeholders throughout the state and nation. Work collaboratively with College development staff to grow donor support of FCS programs, scholarships, and other advancement goals. Represent FCS in local, state and national fora.

Research/Scholarship: (20%)

The Director is expected to maintain a program of externally-funded research/scholarly activities.

MINIMUM QUALIFICATIONS:

Doctoral degree in Family and Consumer Sciences or closely related field.

- Administrative experience within an institution of higher education.
- Ability to manage complex and varied budgets.
- Qualifications suitable for the rank of Full Professor with tenure, including a demonstrated and nationally recognized teaching and research/scholarly record.

PREFERRED QUALIFICATIONS

- Experience with Extension programming in one or more of the subject matter areas of Family & Consumer Sciences
- Experience in land grant institutions.
- Significant record of success in obtaining extramural funding from nationally competitive research programs, private industry or other donors.
- Significant record of success in mentoring undergraduate and graduate students.
- Experience in accreditation processes for academic programs.
- Demonstrated ability to promote programs and accomplishments to external constituents.

PROCEDURE FOR APPLICATION

Confidential review of applications will begin March 4, 2018, and continue until the position is filled.

Please submit a letter of qualification indicating your interest and qualifications for this position. Attach a CV/resume that includes employment history (including dates of employment) and three professional references with contact information.

In addition, please have three letters of reference submitted to the Search Coordinator:

Marty Lunt/AAC/Search Coordinator
University of Idaho
College of Agricultural and Life Sciences
875 Perimeter Drive MS 2335
Moscow, Idaho 83844-2335

Go to <http://uidaho.peopleadmin.com/postings/20116> to apply and submit your resume and cover letter.

FOR FURTHER INFORMATION:

Jodi Johnson-Maynard
Search Chair
208-885-9245
jmaynard@uidaho.edu

Marty Lunt
Affirmative Action & Search Coordinator
208-885-7759
martyl@uidaho.edu

The University of Idaho is an equal opportunity and affirmative action employer. It is the policy of the regents that equal opportunity be afforded in education and employment to qualified persons regardless of race, color, national origin, religion, sex, age, disability or status as a disabled veteran or Vietnam-era veteran. It is also the policy of the University of Idaho to not discriminate based on sexual orientation.

The College of Agricultural and Life Sciences is strongly committed to achieving excellence through cultural diversity. We actively encourages applications and nominations of underrepresented groups.

THE UNIVERSITY OF IDAHO

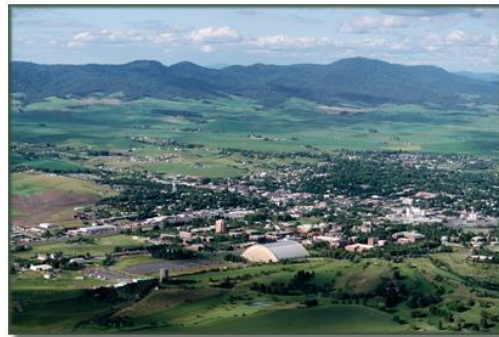
The University of Idaho is a premier destination for higher education and Idaho's only national research institution. From our beautiful residential campus in Moscow, as well as our learning centers that touch every community in Idaho, the University of Idaho is leading our state and region with an energized environment where passion for knowledge and discovery expands intellectual and cultural boundaries.

At the University of Idaho, we attract many of the nation's best students every year, because our expectations are higher and our commitment is stronger. We equip our people with the substantial resources they expect from an internationally recognized land grant institution. Our graduates join a legacy of thinkers, leaders and global citizens that is focused on improving lives within the state and beyond

The University of Idaho has earned the prestigious Carnegie Foundation classification for high research activity. Our researchers attract nearly \$100 million in research grants and contracts each year.

The University of Idaho is home to 12,000 undergraduate, graduate and professional students from all 50 states. International students from more than 76 countries comprise 5 percent of the student body. The university enrolls 42 National Merit Scholars, by far the largest number in Idaho and among the highest concentration of Merit Scholars in the western United States. Nearly 50 percent of the incoming freshmen were in the top quartile of their graduating class.

The university has a commitment to diversity, multiculturalism and community. We actively engage in the recruitment and retention of a diverse workforce and student body that includes members of historically underrepresented groups.



The University of Idaho is a nationally-recognized research institution committed to student success and academic excellence that delivers one of the best educational values in the Pacific Northwest.

We are the state's flagship institution and one of only 72 national land-grant research universities founded to ensure all citizens have access to a high quality education. We lead in teaching and engaged learning in our undergraduate, graduate, doctoral and professional programs. We excel at interdisciplinary research, service to businesses and communities, and in advancing diversity, citizenship, and global outreach. Through our growing residential and networked campuses we develop leaders who will guide Idaho to global economic success, create a sustainable American West, and address our nation's most challenging issues.

Our global commitment to lead makes Idaho a better place to study, to work, to live and to visit. At the University of Idaho, the state is our campus, and the world is our lab. See www.uidaho.edu for more details.

THE COLLEGE OF AGRICULTURAL AND LIFE SCIENCES

The College of Agricultural and Life Sciences advances the health and welfare of people, animals and the environment through research and education in agriculture, community, human and rural development, natural resources, nutrition and life sciences.

The college leads research and Extension efforts related to various issues and our faculty and students are finding solutions to the world's most critical challenges in order to create and sustain an abundant food and energy supply, a healthy environment and successful families and communities.

Agriculture is one of the main industries in the state of Idaho, with over \$25 billion in total sales, accounting for 20 percent of the state's total sales. Agribusiness is responsible for 14 percent of Idaho's GSP and approximately one in every seven jobs in the state is related to agriculture.

The University of Idaho plays a key role in Idaho's agriculture industry, through research, teaching and Extension activities.

MISSION STATEMENT

The College of Agricultural and Life Sciences fulfills the intent and purpose of the land-grant mission and serves the food-industry, people and communities of Idaho and our nation:

- Through identification of critical needs and development of creative solutions;
- Through the discovery, application, and dissemination of science-based knowledge;
- By preparing individuals through education and life-long learning to become leaders and contributing members of society;
- By fostering the healthy populations as individuals and as a society;
- By supporting a vibrant economy, benefiting the individual, families and society as a whole.

VALUES STATEMENT

The College of Agricultural and Life Sciences values:

- Excellence in creative discovery, instruction and outreach;
- Open communication and innovation;
- Individual and institutional accountability;
- Integrity and ethical conduct;
- Accomplishment through teamwork and partnership;
- Responsiveness and flexibility;
- Individual and institutional health and happiness.

VISION STATEMENT

We will be the recognized state-wide leader and innovator in meeting the state's current and future challenges to create healthy individuals, families and communities, and enhance sustainable food systems respected regionally and nationally through focused areas of excellence in teaching, research and outreach with extension serving as a critical knowledge bridge between the University of Idaho, College of Agricultural and Life Sciences, and the people of Idaho.

See www.uidaho.edu/CALS for more details.

MOSCOW, IDAHO



The City of Moscow is located along the state border with Washington, with a population of approximately 25,000. Although a small town, approximately 7 square miles, there are many things to see and do within a short distance. Daytime temperatures average between the mid-80s to the mid-30s. There are 17 well maintained parks located throughout Moscow offering activities such as basketball, volleyball, picnicking, and jungle gyms.

SCHOOLS

The Moscow School District operates Moscow High School, an alternative high school, a middle school and 4 elementary schools. There are two public charter schools, Moscow Charter School (K-8) and Palouse Prairie School of Expeditionary Learning (K-8). There are also three private school, Logos School (K-12), St. Mary's School (K-8) and Palouse Hills Christian School (K-8).

CULTURE

LIONEL HAMPTON JAZZ FESTIVAL

Each February, the University of Idaho hosts the largest education jazz festival in the world. The event is a week-long festival which brings students from around the region to participate in workshops and brings acclaimed work-famous jazz musicians to the Moscow campus for evening concerts.

NATIONAL LENTIL FESTIVAL

Approximately 20 percent of the lentils in the United States are grown in the Palouse region. The National Lentil Festival is celebrated annually in late August and draws people from all over the country to enjoy fun activities and an array of lentil dishes. The festival begins with free lentil chili for everyone at the World's Largest Bowl of Lentil Chili, live music, local microbrew beer and wine garden, games and activities for the whole family, a great selection of food, arts, crafts, and information booths, and live entertainment on four stages. There is a Tase T. Lentil 5K Fun Run, Lentil Pancake Breakfast, and a Grand Parade through the middle of downtown Pullman. There is a Lentil Lane Food Court, Lentil Festival Marketplace, and beer and wine garden.

RENAISSANCE FAIR

The Renaissance Fair is a two-day celebration held the weekend of the first Sunday in May in East City Park. It is the celebration of spring with food, parades, and craftspeople and musicians from across the Northwest. Kid Village keeps the kids busy with crafts, face painting, maypole dancing, puppet shows, obstacle courses, mini-challenge course, chalk the walk and much more.

RENDEZVOUS IN THE PARK

Rendezvous in the park is a 3-day summer music and art festival held at East City Park in late July. Rendezvous for Kids is a 2-day arts festival for children and occurs in conjunction with Rendezvous in the Park. Rendezvous for kids offers an opportunity for children to experience artistic disciplines including music, drama, tie-dye, dance, painting, and sculpture.

TOP RATED THINGS TO DO IN MOSCOW

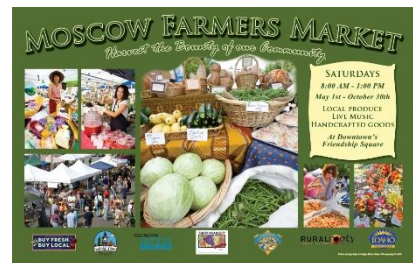
UNIVERSITY OF IDAHO ARBORETUM & BOTANICAL GARDENS



If you enjoy a good walk, the University of Idaho Arboretum and Botanical Gardens fills the 63-acre valley south of the President’s Residence on Nez Perce Drive. The arboretum is organized into geographical groupings of Asian, European, Eastern, and Western North American sections. There are over 120 dedicated trees and groves, trails, water features, and 27 granite benches for enjoying our seasonal changes. The arboretum also provides a unique opportunity to observe resident and migratory birds throughout the year.

MOSCOW FARMERS MARKET

Moscow offers one of the best farmers markets in the region and is an excellent place to pick up fresh produce, meat, delicious homemade goods, nursery plants, flowers and handmade crafts. The farmers market is a great place to celebrate local farmers, artists, craftspeople and musicians.



Every Saturday, May through October from 8:00 AM to 1:00 PM with local musicians performing from 9:30 AM to 1:00 PM

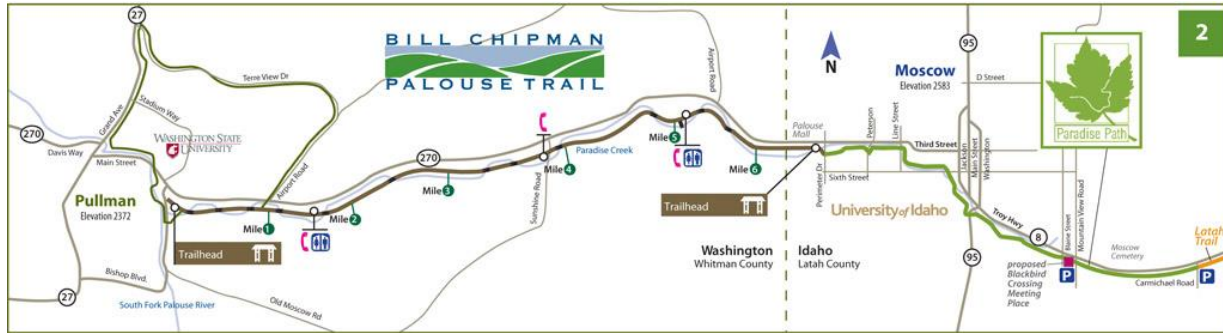
THE LATAH TRAIL AND THE BILL CHIPMAN PALOUSE TRAIL

For the outdoor enthusiast, Moscow is centrally located between the Latah Trail and the Bill Chipman Palouse Trail. The Latah Trail is 12 miles of paved trail that links Moscow to its neighboring city Troy to the East. The Latah Trail Bike Path is a non-motorized recreational trail along the historic Moscow-Arrow railroad corridor.

THE TRAIL



The Bill Chipman Palouse Trail is about 7 miles of paved trail that links Moscow to its neighboring city Pullman to the West. This trail follows the corridor from the Union Pacific Railroad. This trail follows Paradise Creek and crosses 13 original railroad bridges.



UNIVERSITY OF IDAHO GOLF COURSE

The University of Idaho Golf Course offers a challenging course with a variety of shots from uneven lies to elevated and recessed greens. The front nine provides scoring opportunities featuring three par 5’s in an open grassland venue. The back nine tightens up into a narrow parkland theme, including two difficult par 3’s. The round concludes by running the gauntlet of the last three challenging holes known by locals as “heartbreak ridge.”

Employees of the University of Idaho receive a discounted rate for passes, including the Gold Pass which includes Golf, Cart, and Range Access.



UNIVERSITY OF IDAHO RECREATION CENTER



The Student Recreation Center is a great resource for students, employees and alumni to workout. The recreation center offers weight training and circuit areas, an indoor track (9 laps = 1 mile), and a multi-activity court. Locker rooms with saunas are also available. Wellness classes are offered throughout the year with certified instructors and include cycling, yoga, Pilates, and Zumba. Unlimited wellness passes are available for employees and spouses and can be purchased for \$6.50 each per pay period or combined with unlimited access to the Recreation Center facilities for \$18.00 each per pay period. Unlimited access to the Recreation Center can be purchased without the Wellness option for \$13 per pay period.

Within the Recreation Center is a climbing center that features a 55-foot pillar, 24-foot instructional wall, cave and bouldering wall totaling 6,000 square feet of climbing area. There is an outdoor rental center which offers all sorts of outdoor gear ranging from kayaks and canoes, tents and camping gear, to skis and snowboards.

THE REGION

The City of Moscow is located in the heart of the Palouse. The Palouse is well known for its rolling hills and rich loess soil. Area crops include wheat, barley, peas, lentils, chickpeas, garbanzo beans and canola. Moscow may be small in size but it is rich in what it has to offer.

Spokane, Washington and Coeur d’Alene, Idaho are located only 85 miles north of Moscow. Coeur d’Alene is the largest city in the northern Idaho Panhandle and is located on beautiful Lake Coeur d’Alene. The city is

surrounded by wooded lands east of the city which have been designated for protection and management as the Coeur d'Alene National Forest and contains many lakes and campgrounds. Spokane, Washington is located only 30 miles to the west of Coeur d'Alene. Spokane offers big city entertainment and shopping. The Spokane Falls, located in the center of the city. Spokane Falls is located in downtown Spokane as part of Riverfront Park. Riverfront Park offers a 15 minute Sky Ride over the falls for an outstanding view of the second largest urban falls in the United States. Riverfront Park also offers the Loeffl Carrousel, amusement rides, IMAX theatre, an Ice Palace and the Big Red Wagon for kids to climb and slide down the handle. The city's nickname is the Lilac City and each year the Lilac Festival celebrates the coming of spring. Spokane is home to Bloomsday, the largest timed foot race in the world with over 50,000 participants per year, and Hoopfest, the largest 3-on-3 basketball tournament in the world. Grand Coulee Dam, 90 miles West of Spokane is one of the largest concrete structures in the world and is just 57 feet short of a mile long.

Moscow is a great place for any outdoor enthusiast and is centrally located to many outdoor activities:

7 ski areas within 100 miles of Moscow.

- Silver Mountain (56 miles)
- Mt. Spokane (59 miles)
- Schweitzer (76 miles)
- Lookout Pass (81 miles)
- Bluewood (81 miles)
- 49 Degrees North (90 miles)
- Brundage Mountain (94 miles)

5 Public Lands within 40 miles of Moscow.

- McCrosky State Park (18 miles)
- Hells Gate State Park (27 miles)
- Winchester State Park (28 miles)
- Heyburn State Park (28 miles)
- Dworshak State Park (34 miles)

